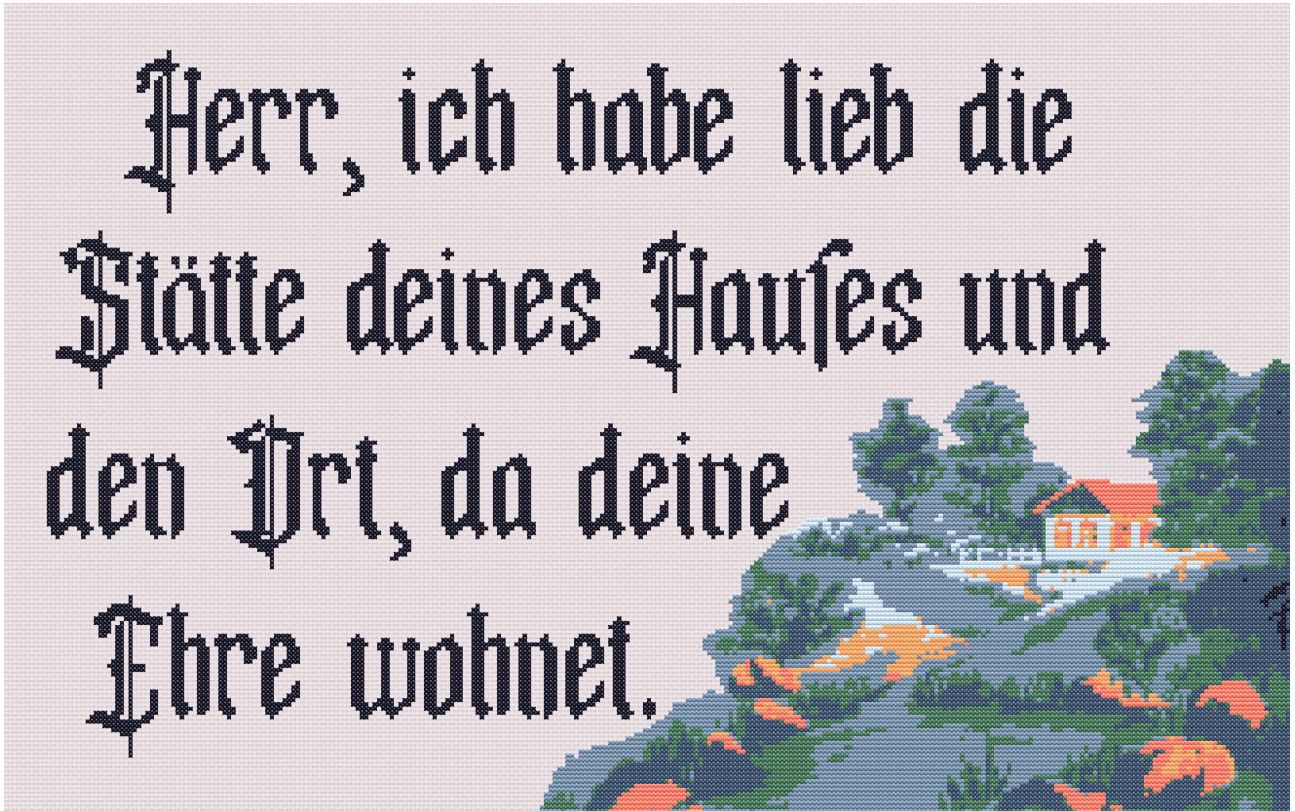


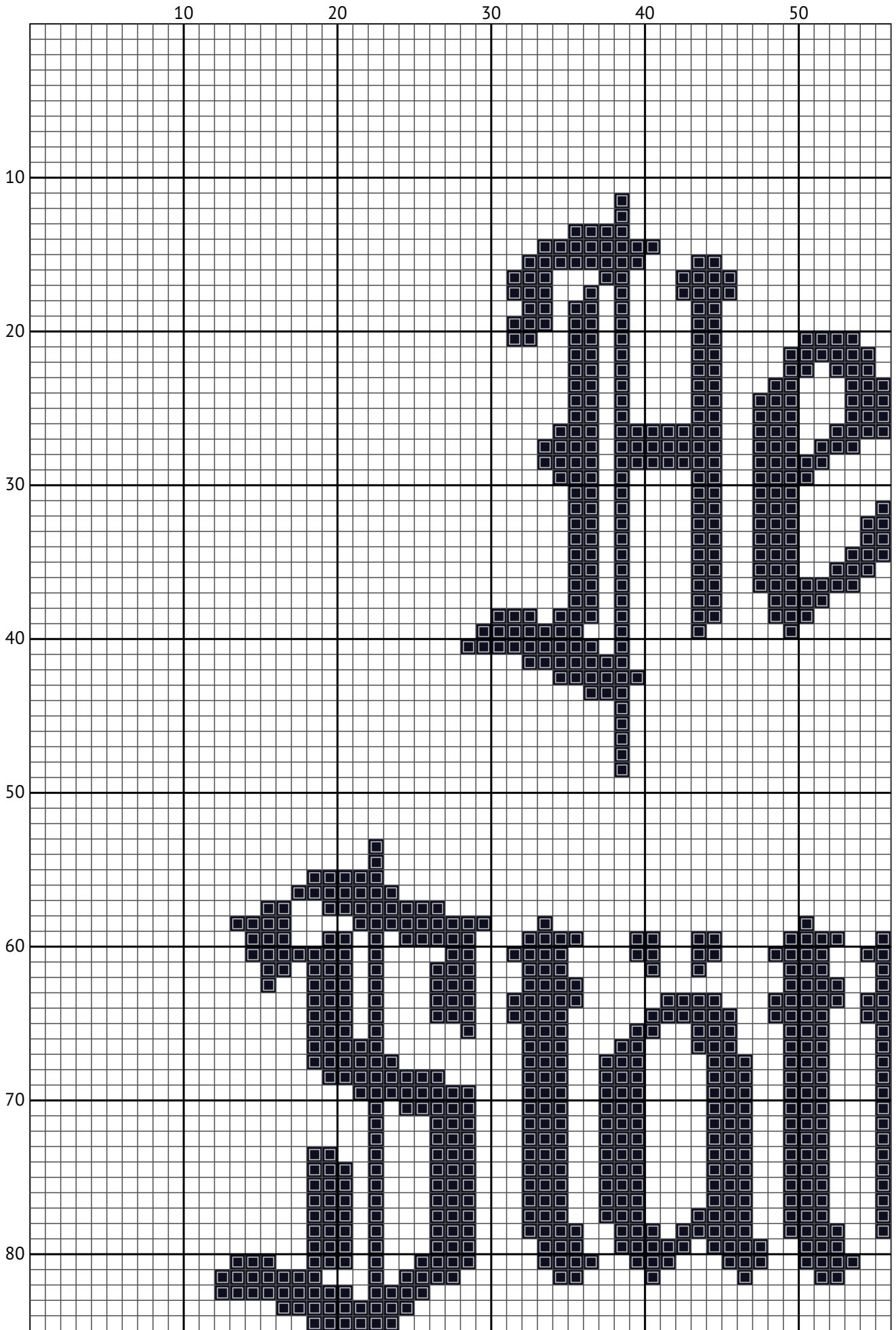
1 (3)\_png

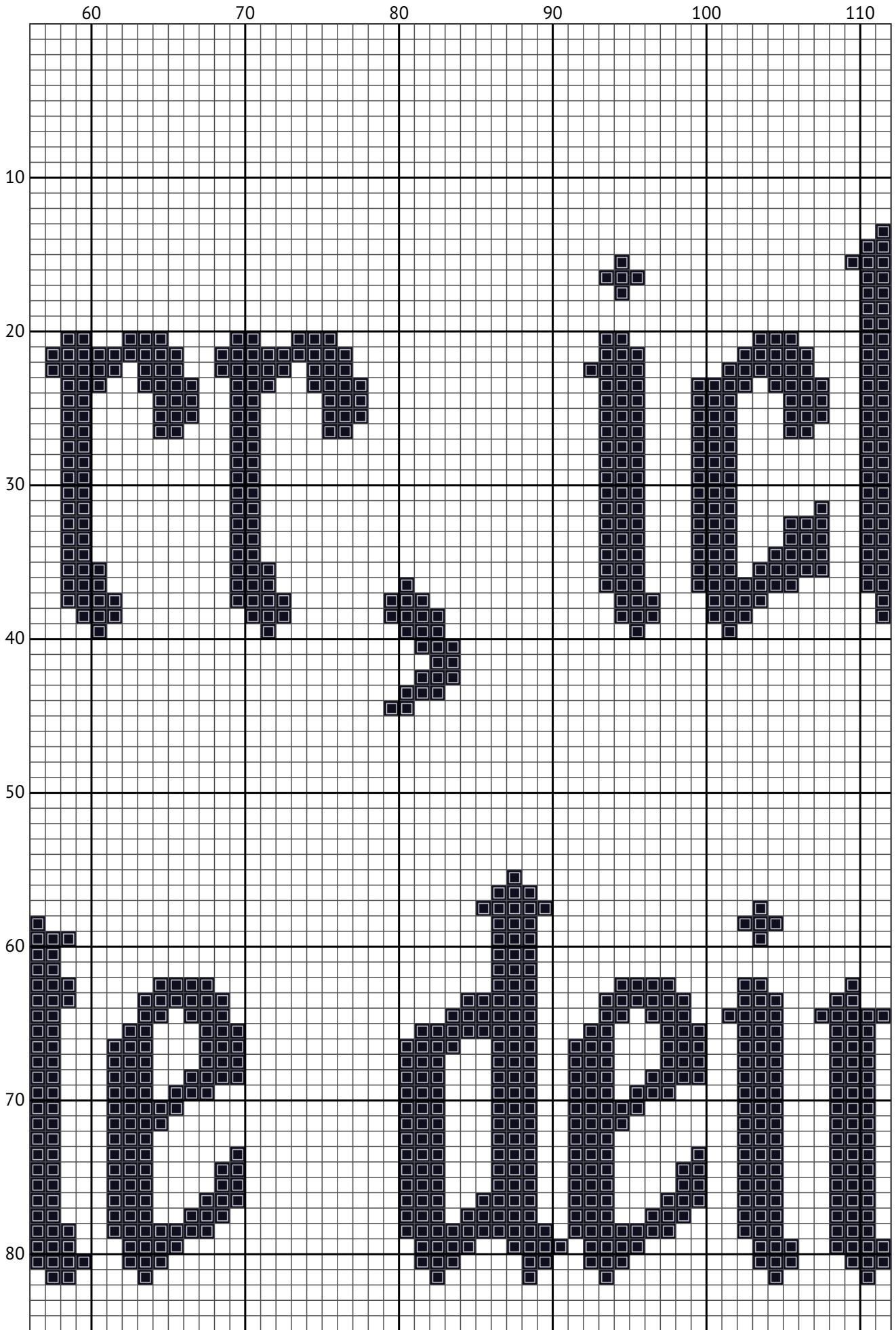
Cross stitch chart

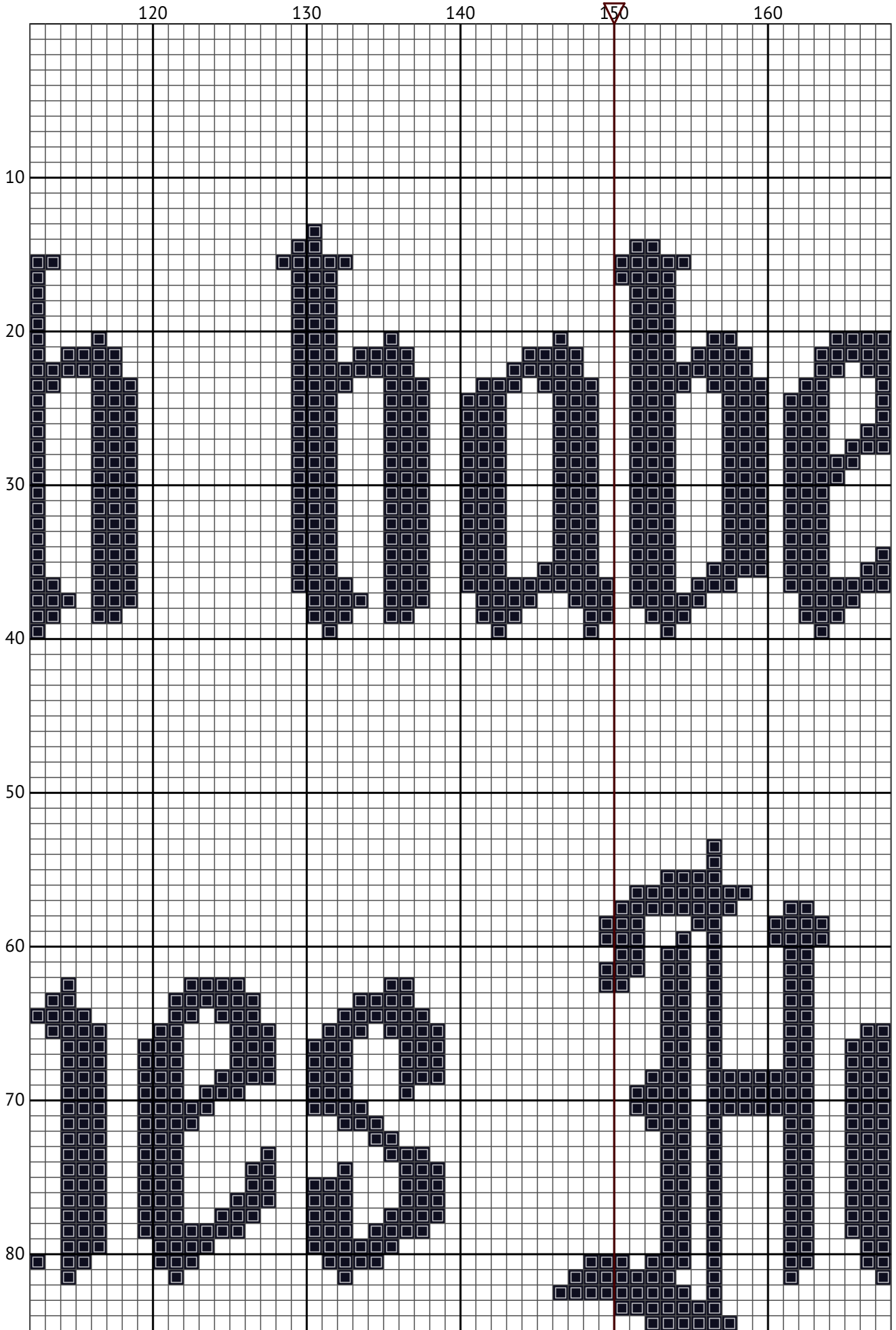


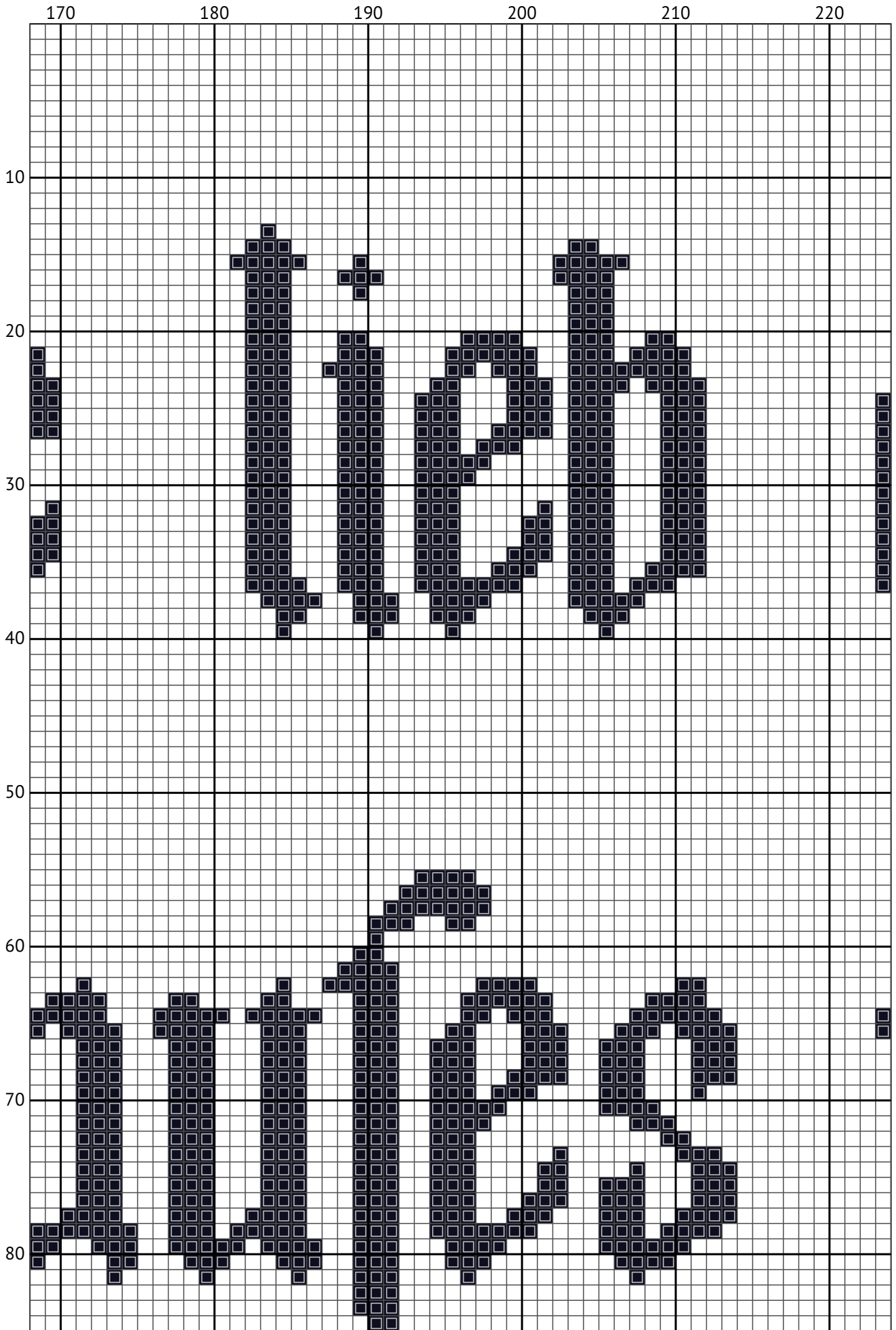
Design size: 300 x 189 stitches

Chart imported from image









230

240

250

260

270

280

10

20

30

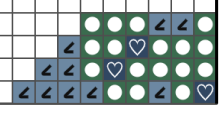
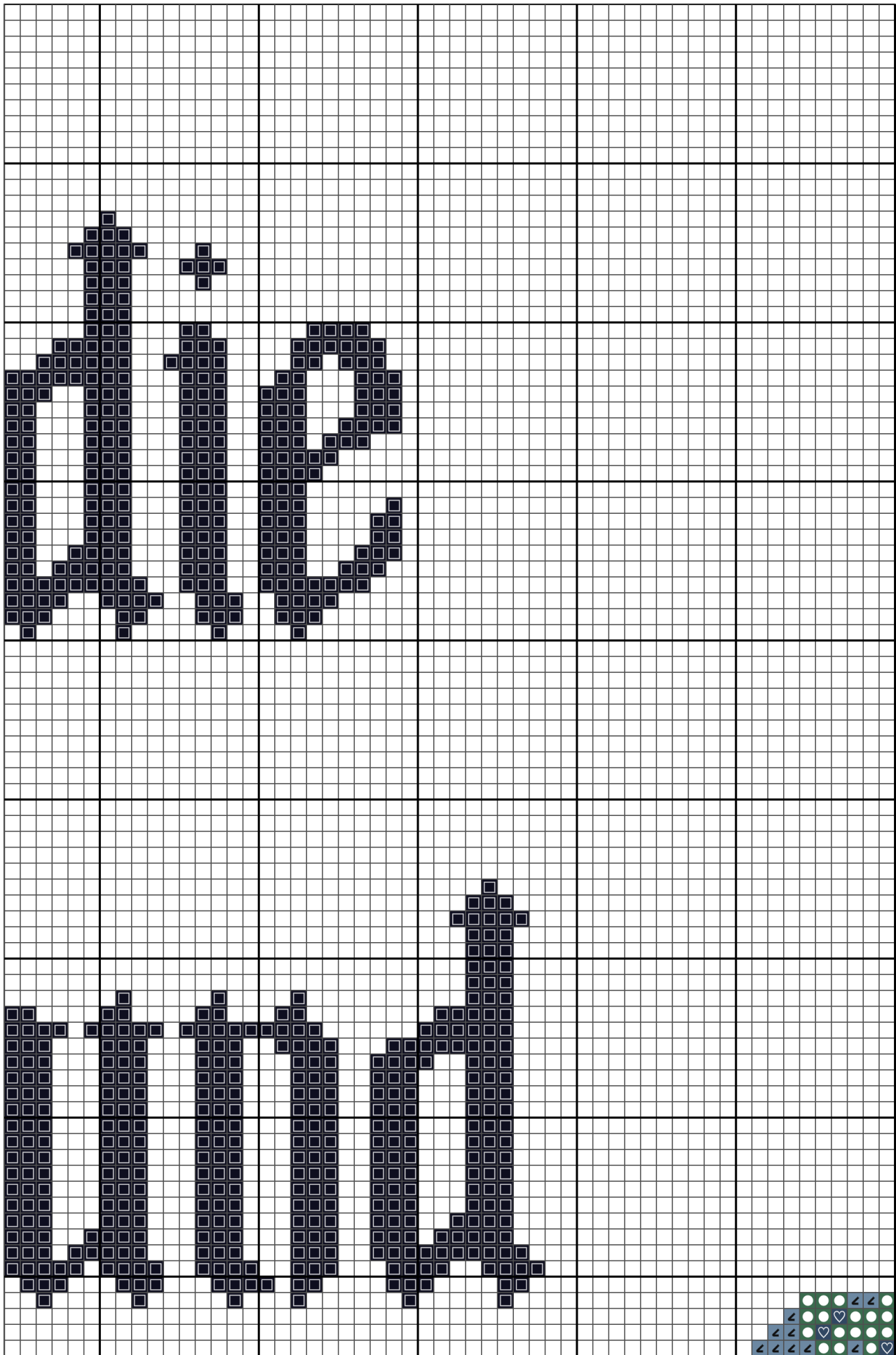
40

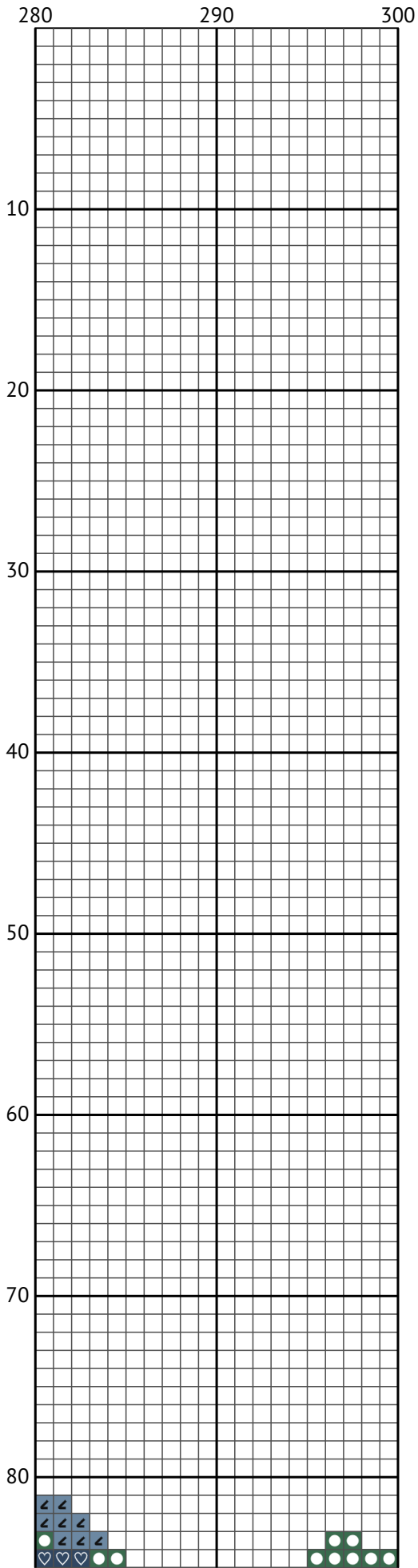
50

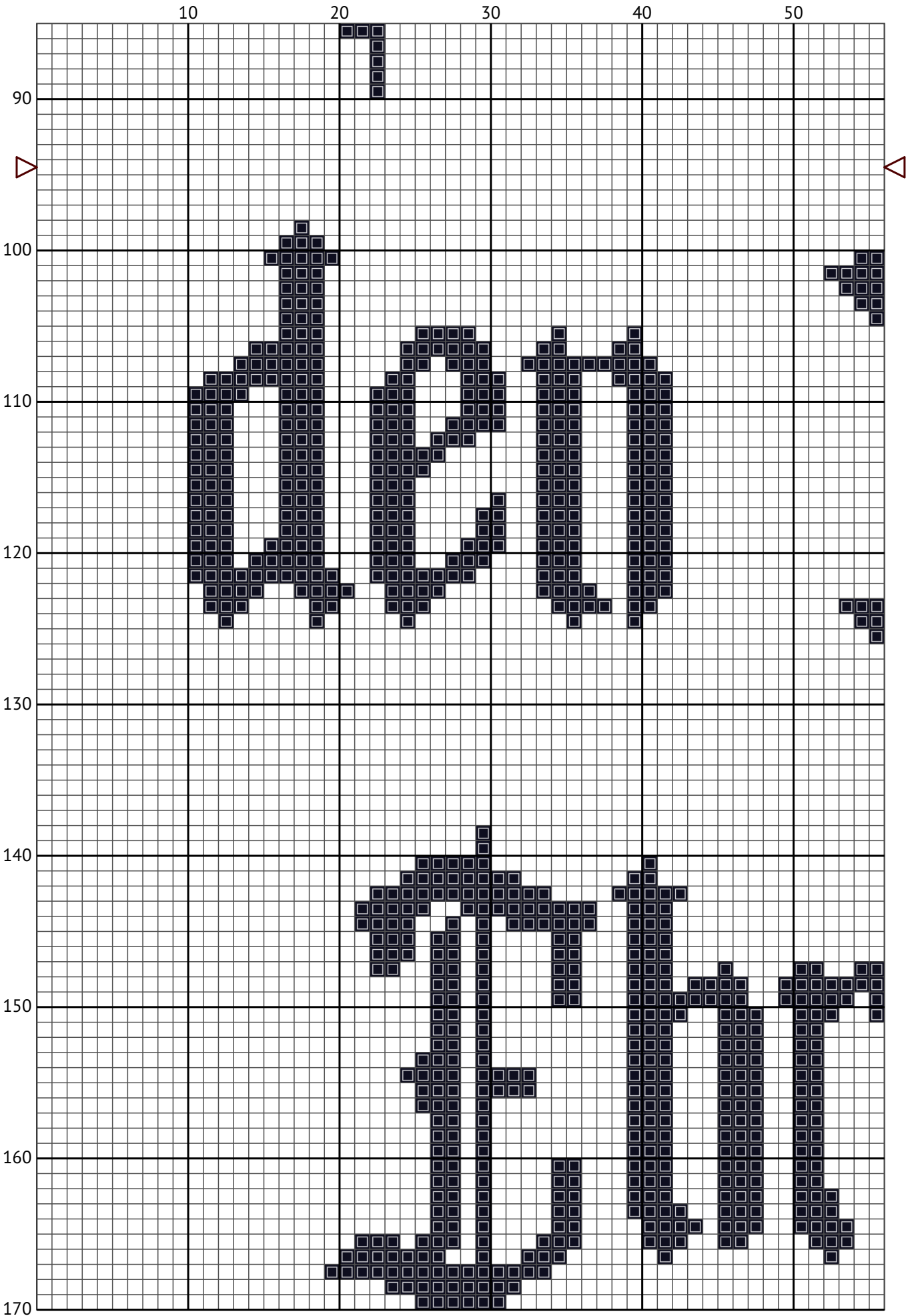
60

70

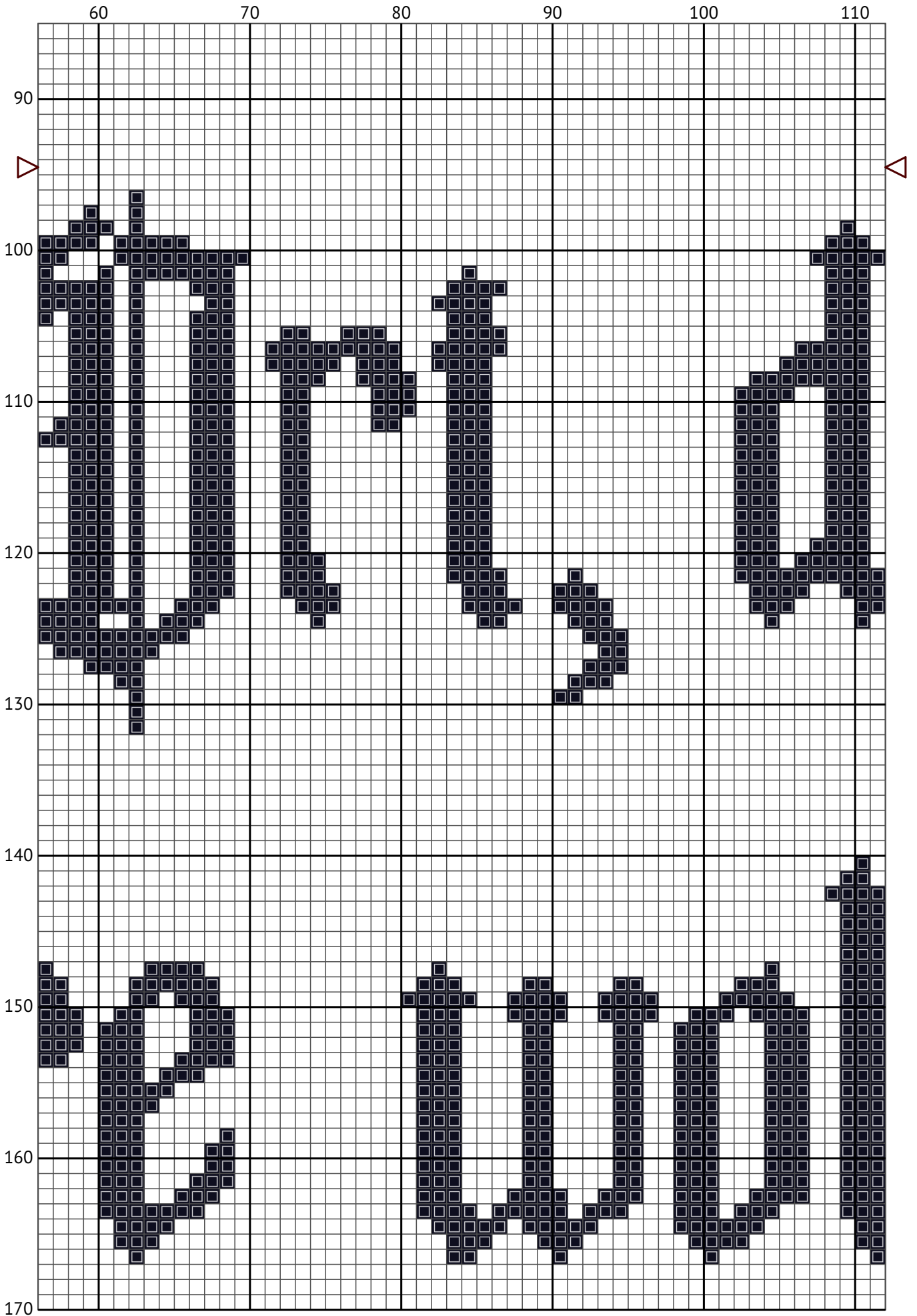
80



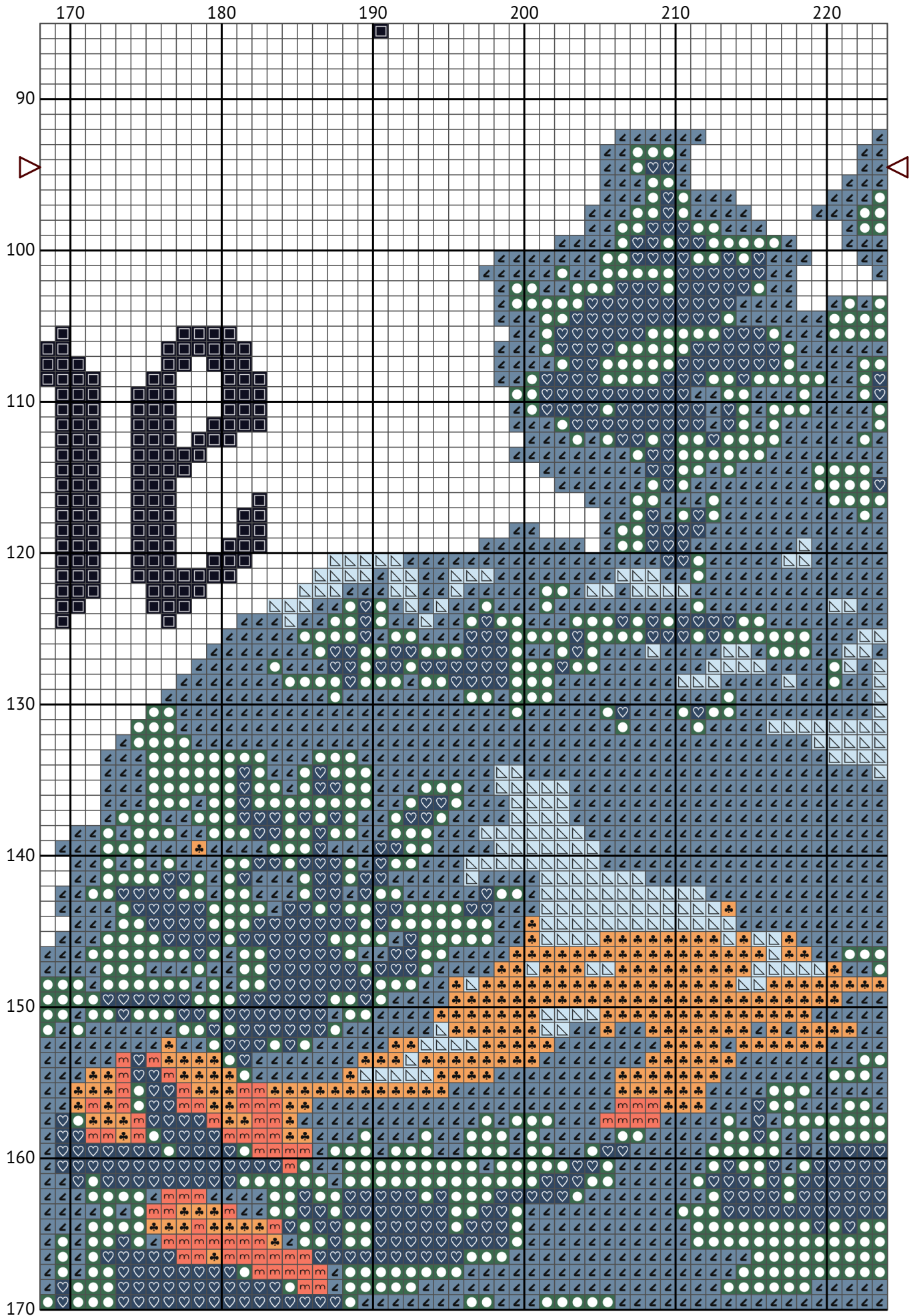


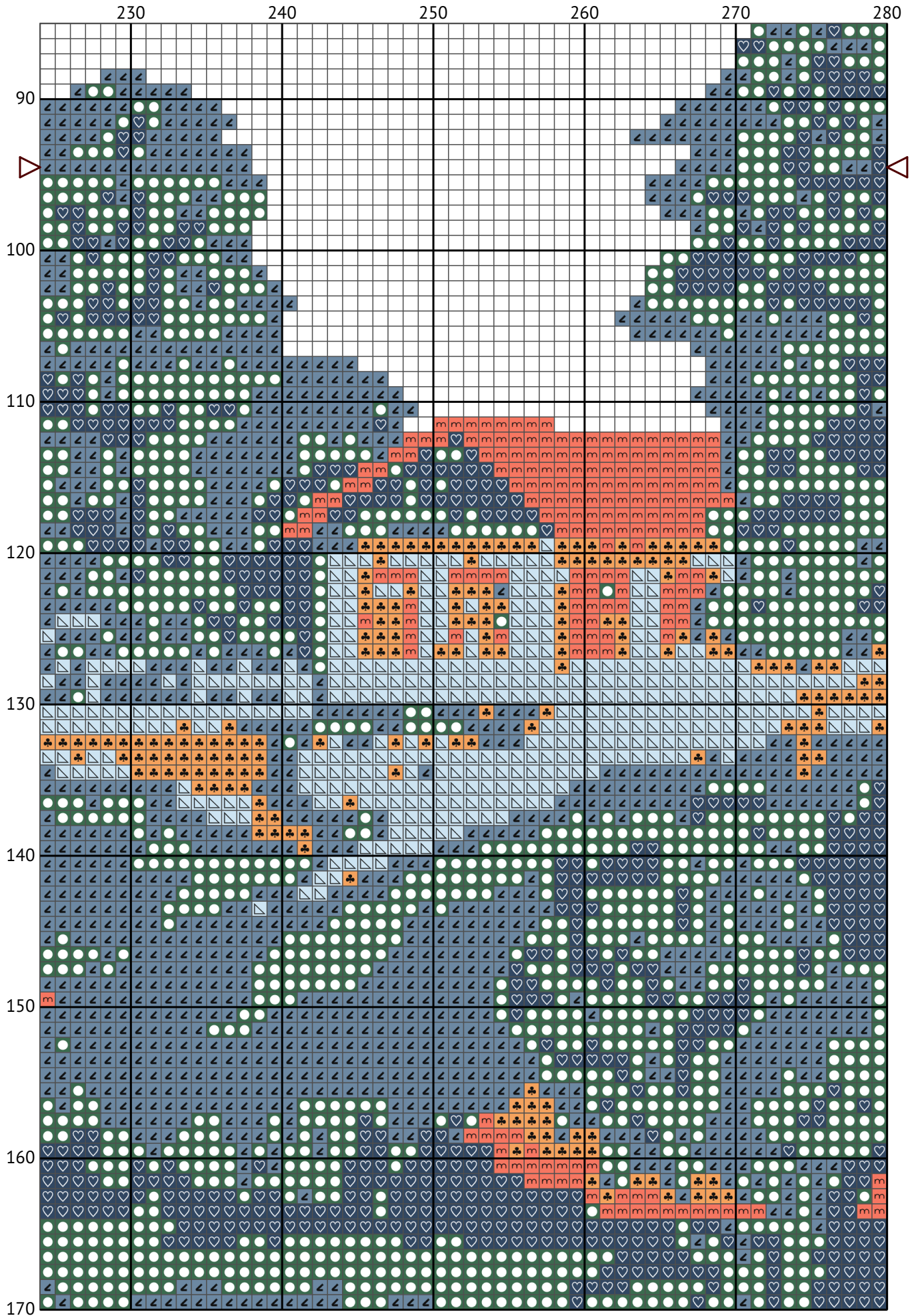


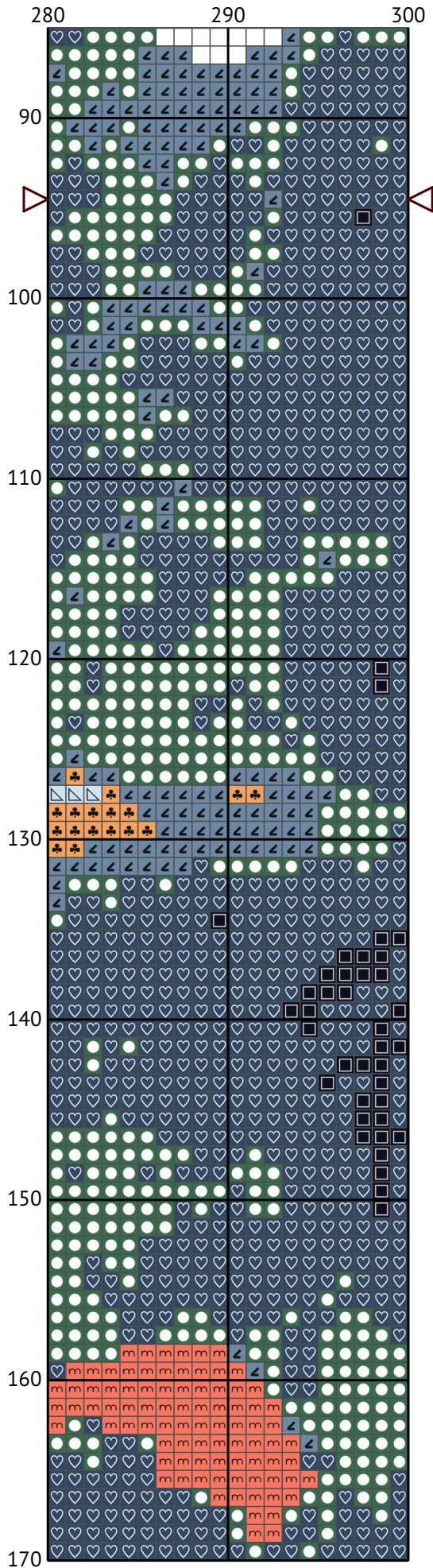




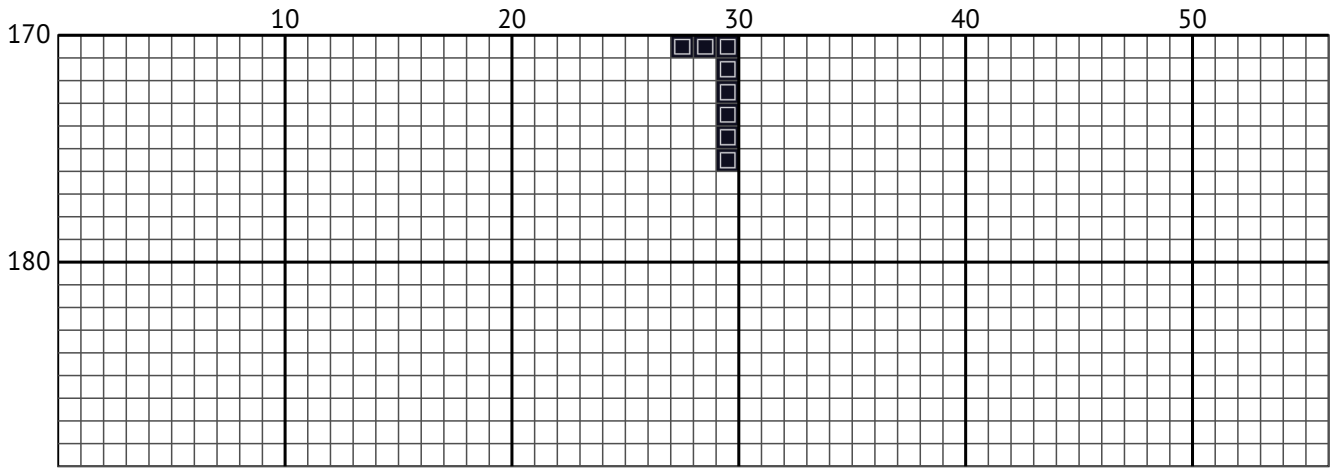


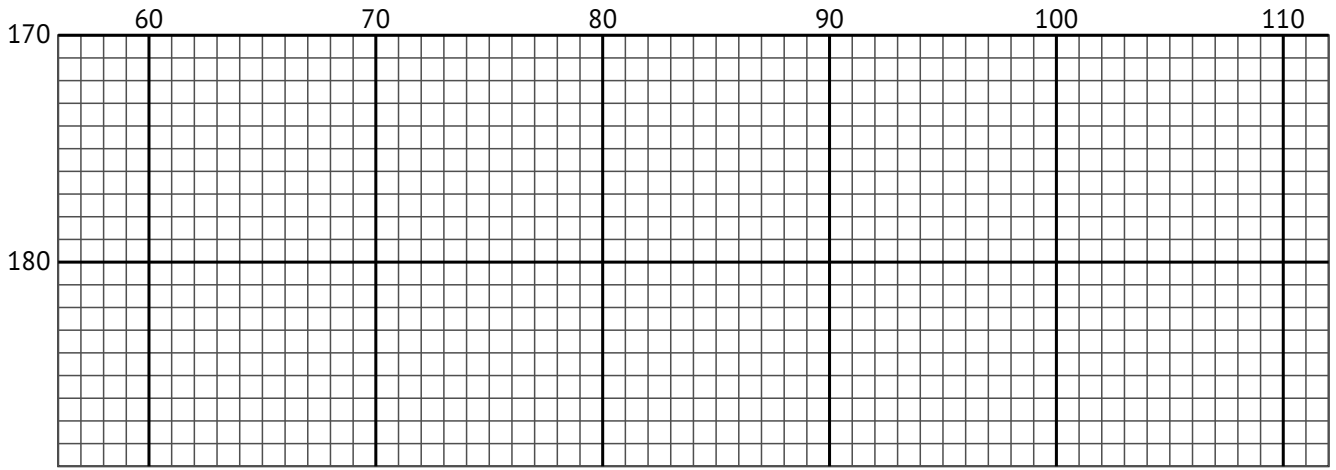


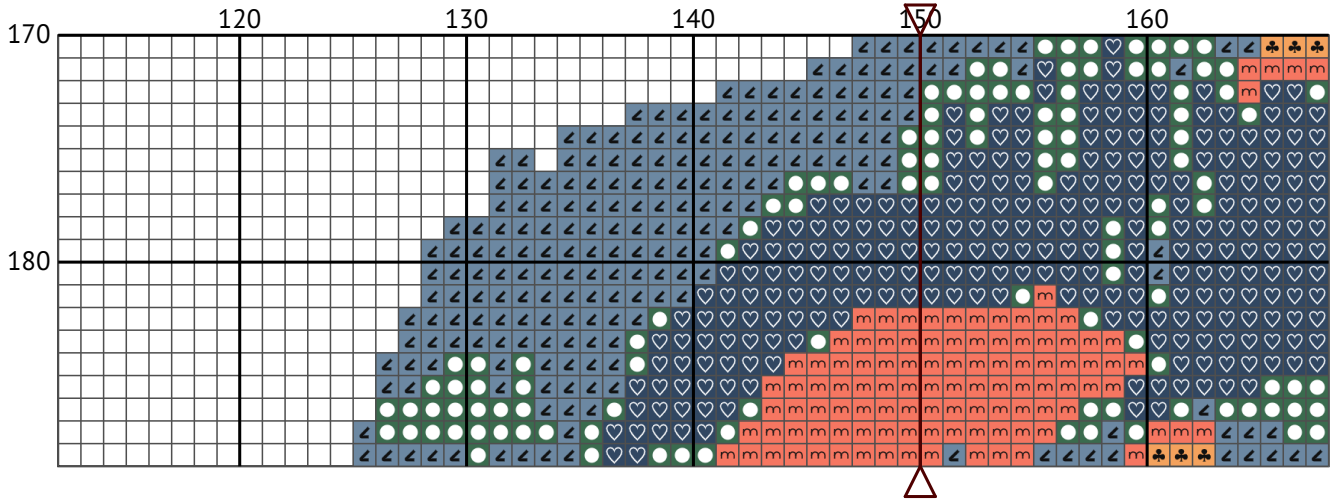




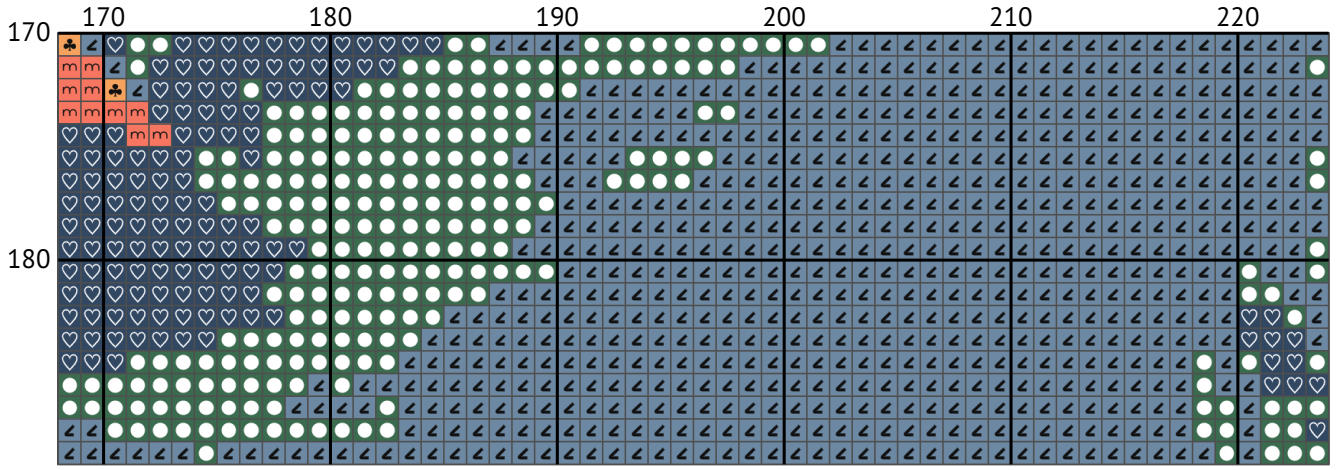
1 (3)\_png

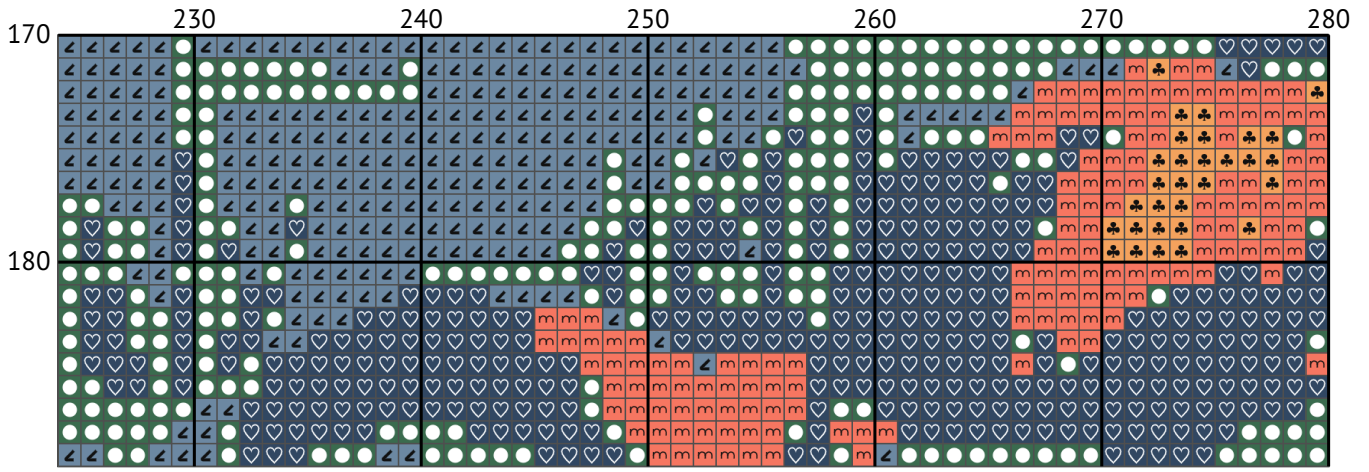


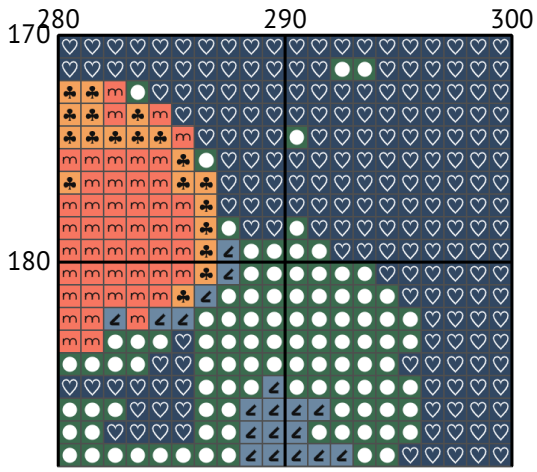


























## Floss list for crosses

Use 2 strands of thread for cross stitch

N	Symbol	Number	Name	Stitches
1	 	DMC 352	Coral - Light	667
2	 	DMC 930	Antique Blue - Dark	3041
3	 	DMC 932	Antique Blue - Light	4156
4	 	DMC 939	Navy Blue - Very Dark	7188
5	 	DMC 3753	Antique Blue - Ultra Very Light	615
6	 	DMC 3815	Celadon Green - Dark	3262
7	 	DMC 3827	Golden Brown - Pale	513