

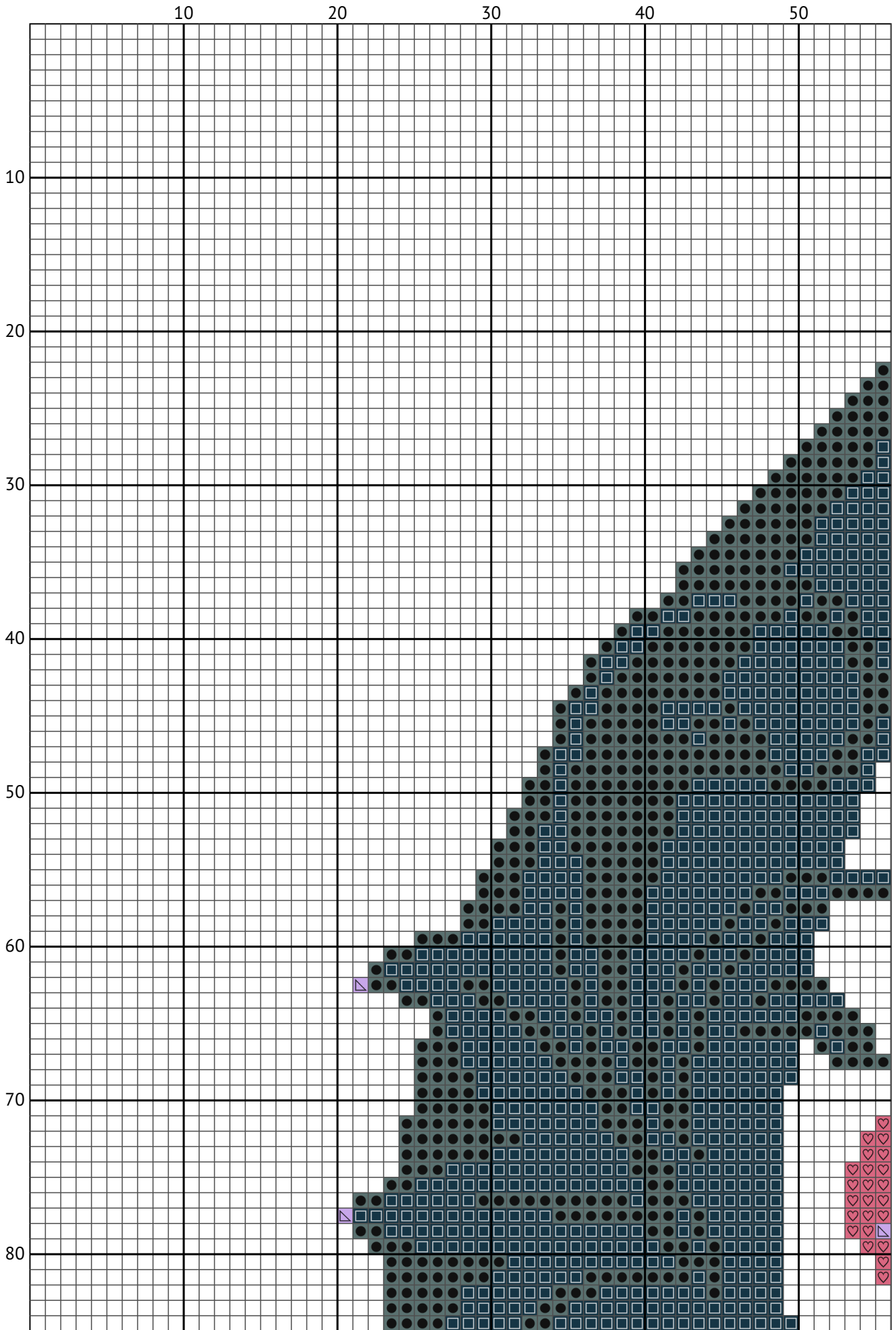
1 (4)_png

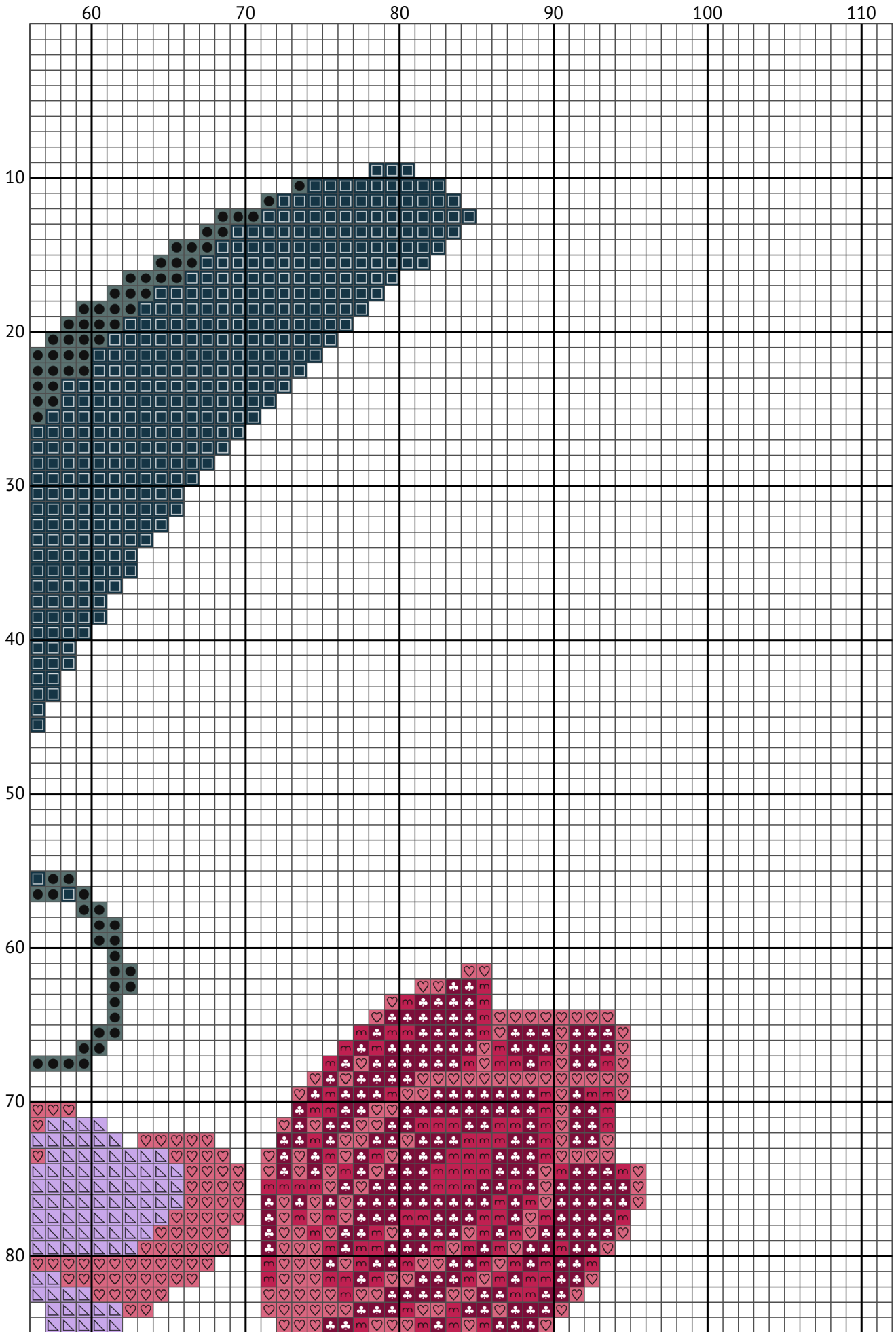
Cross stitch chart

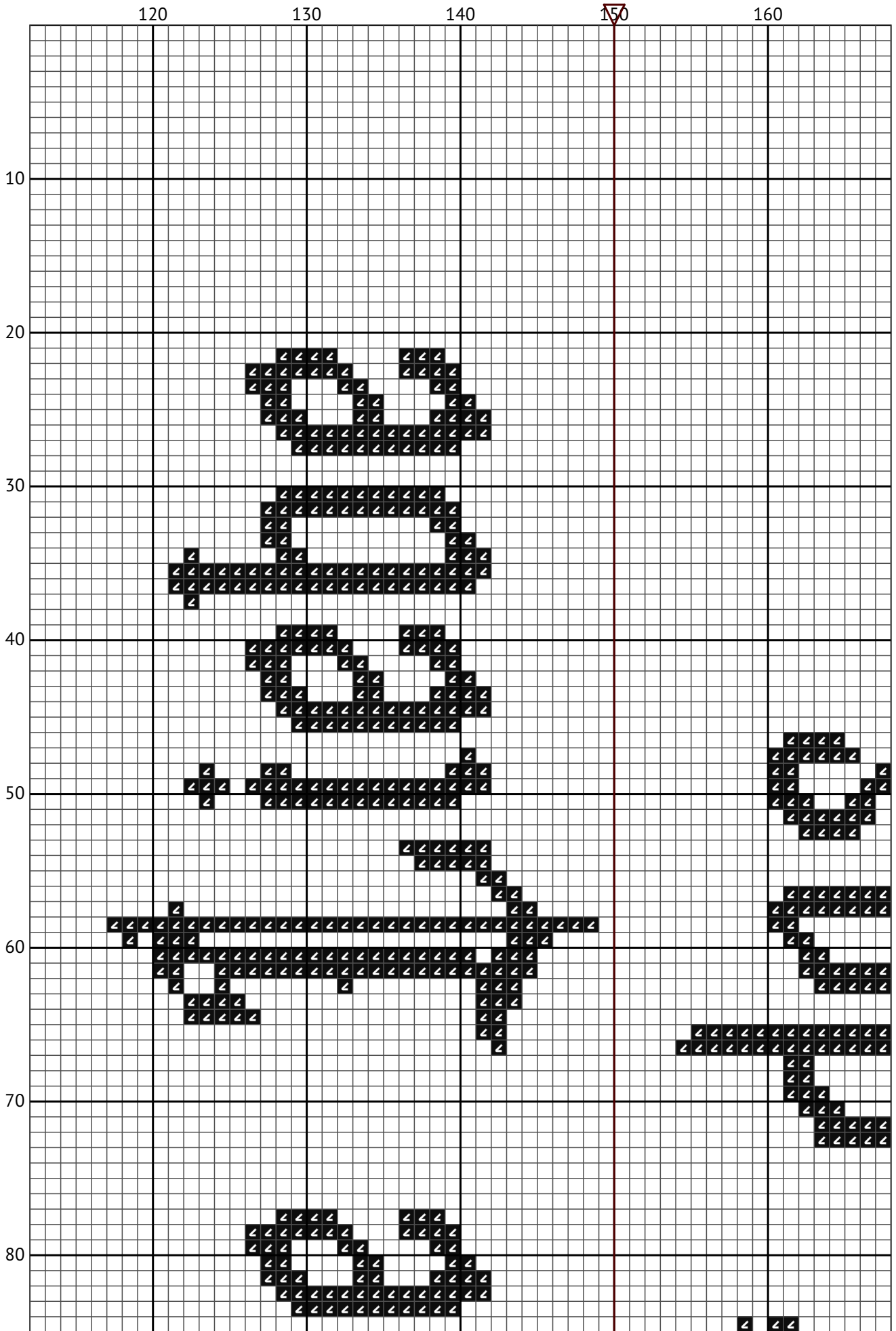


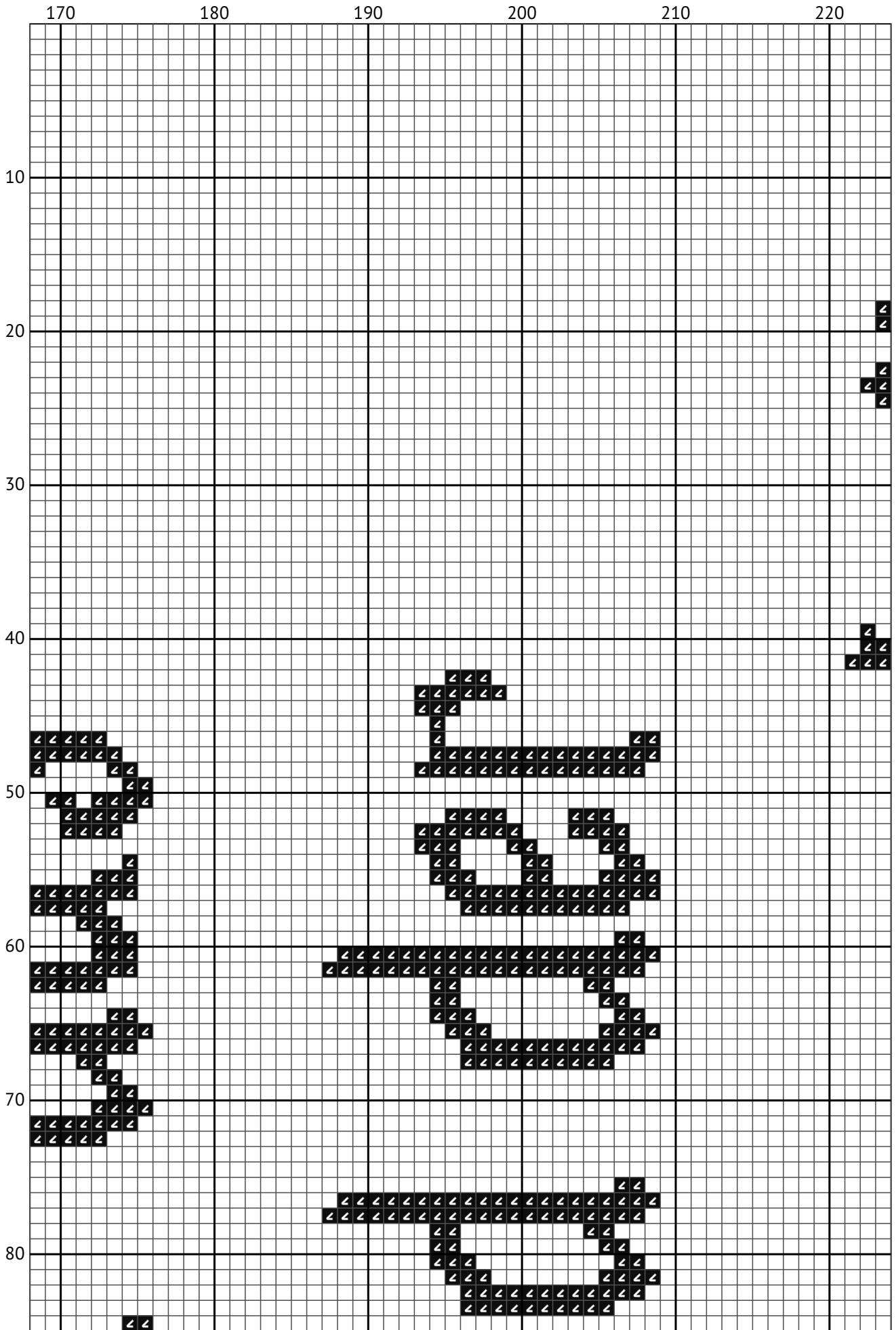
Design size: 300 x 210 stitches

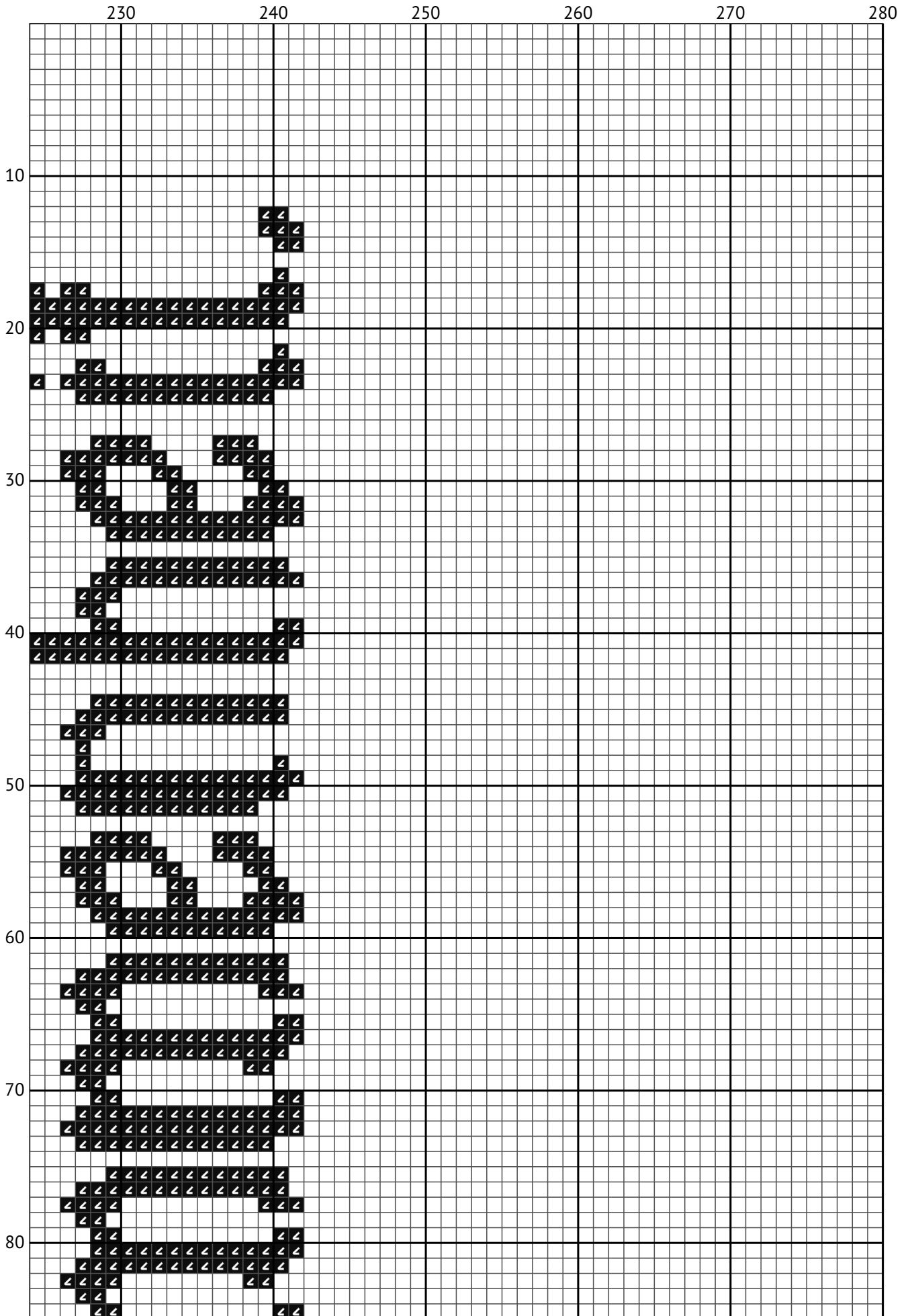
Chart imported from image

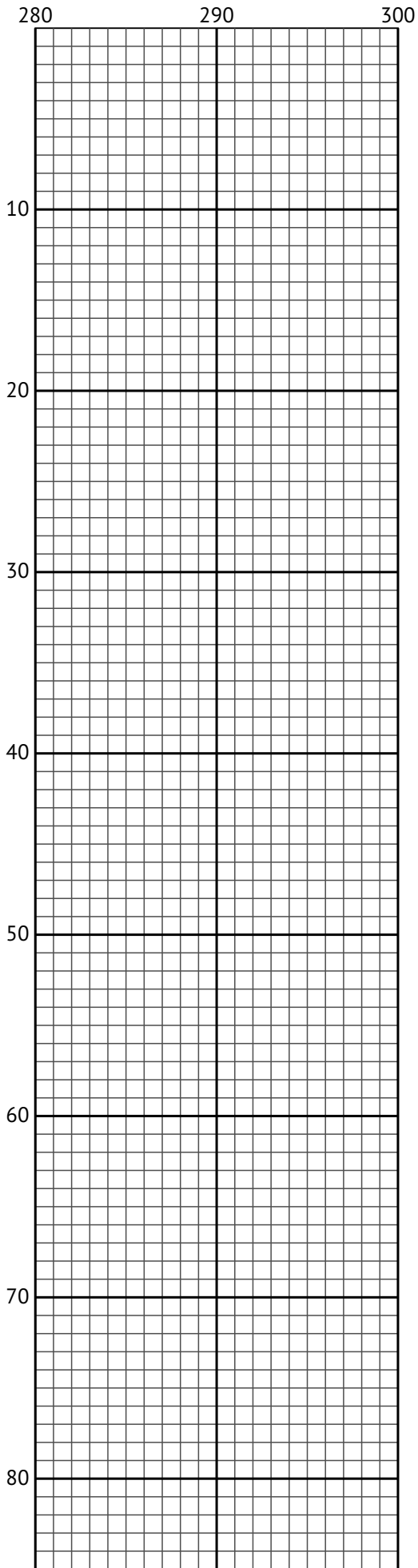


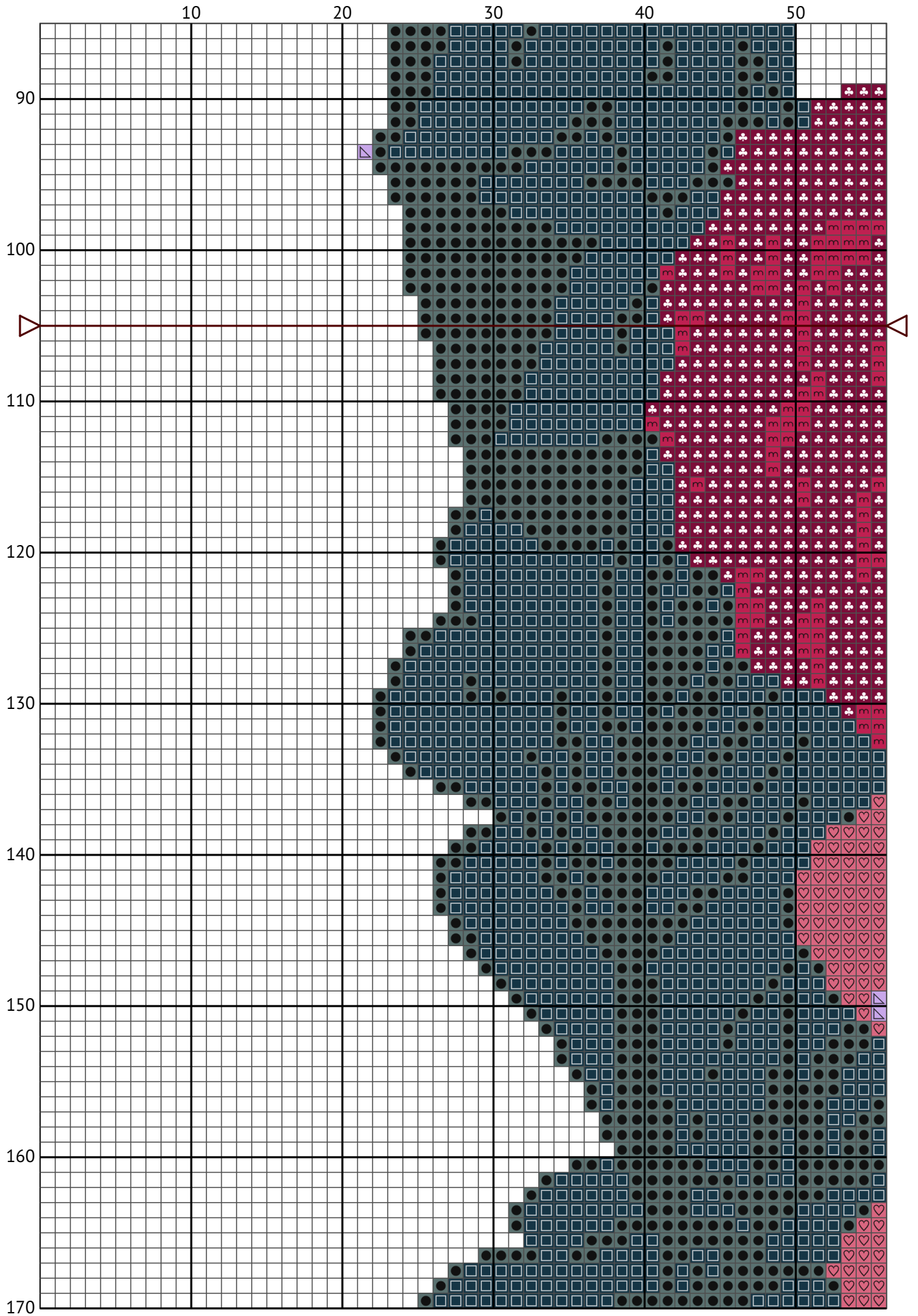


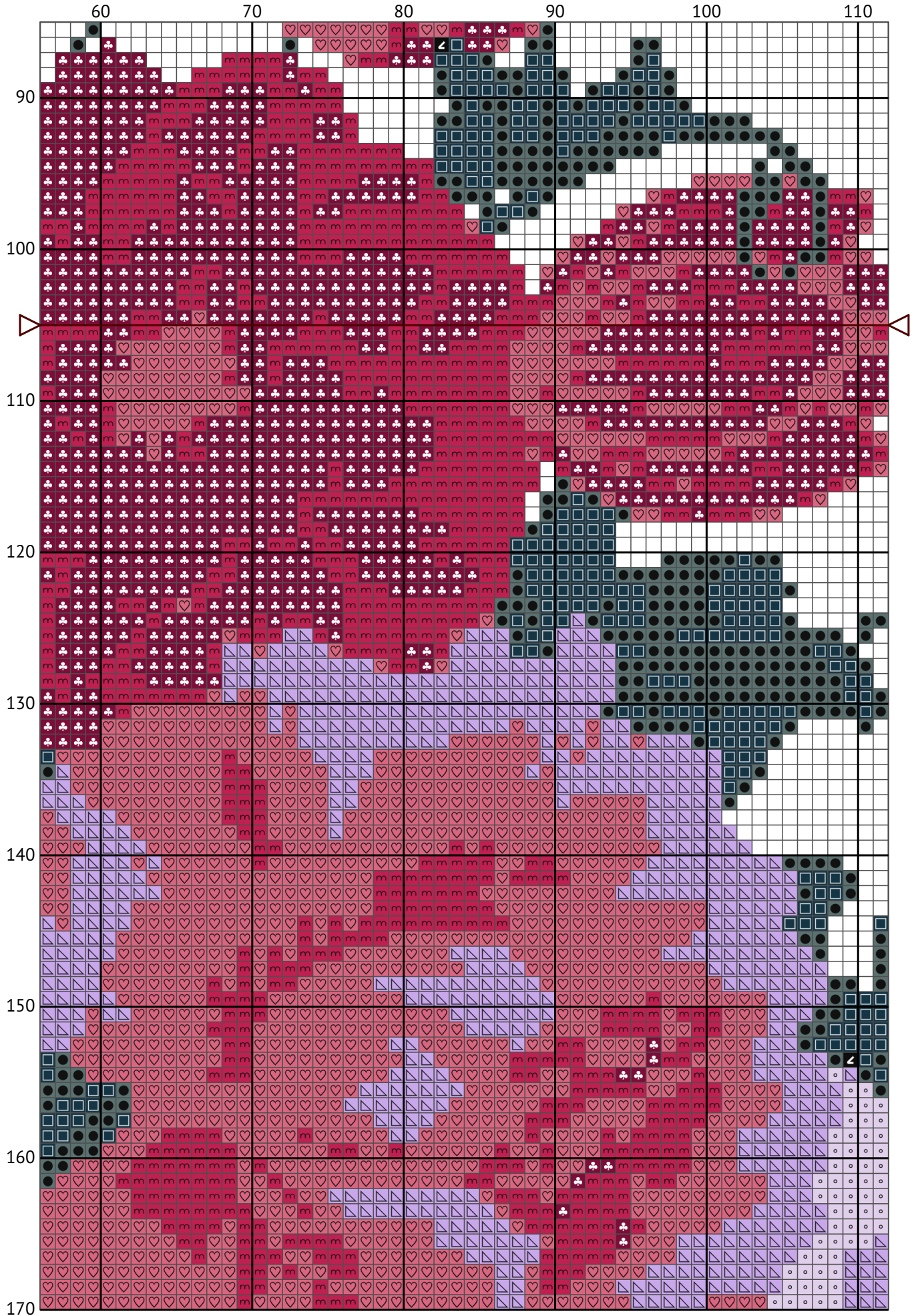


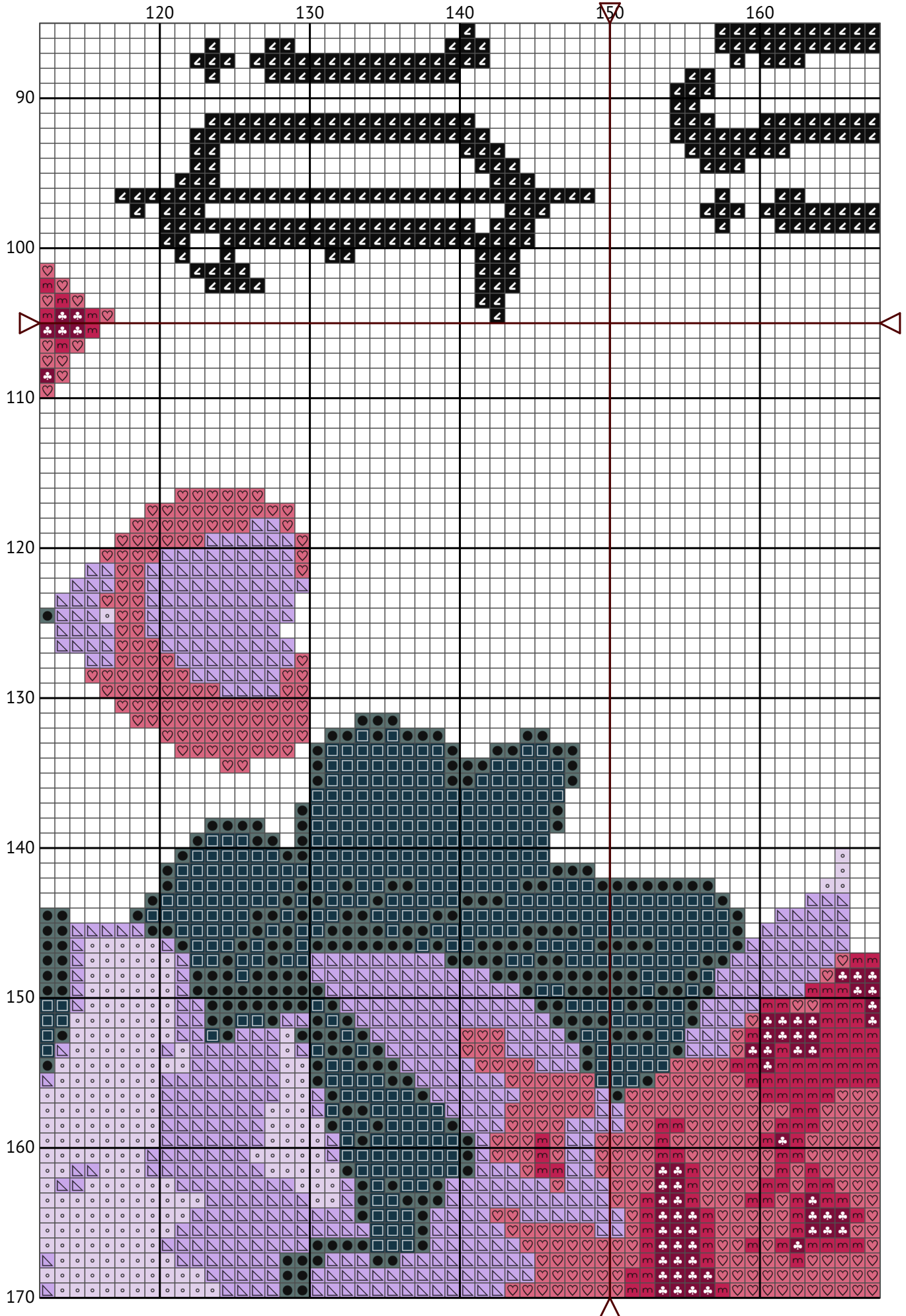


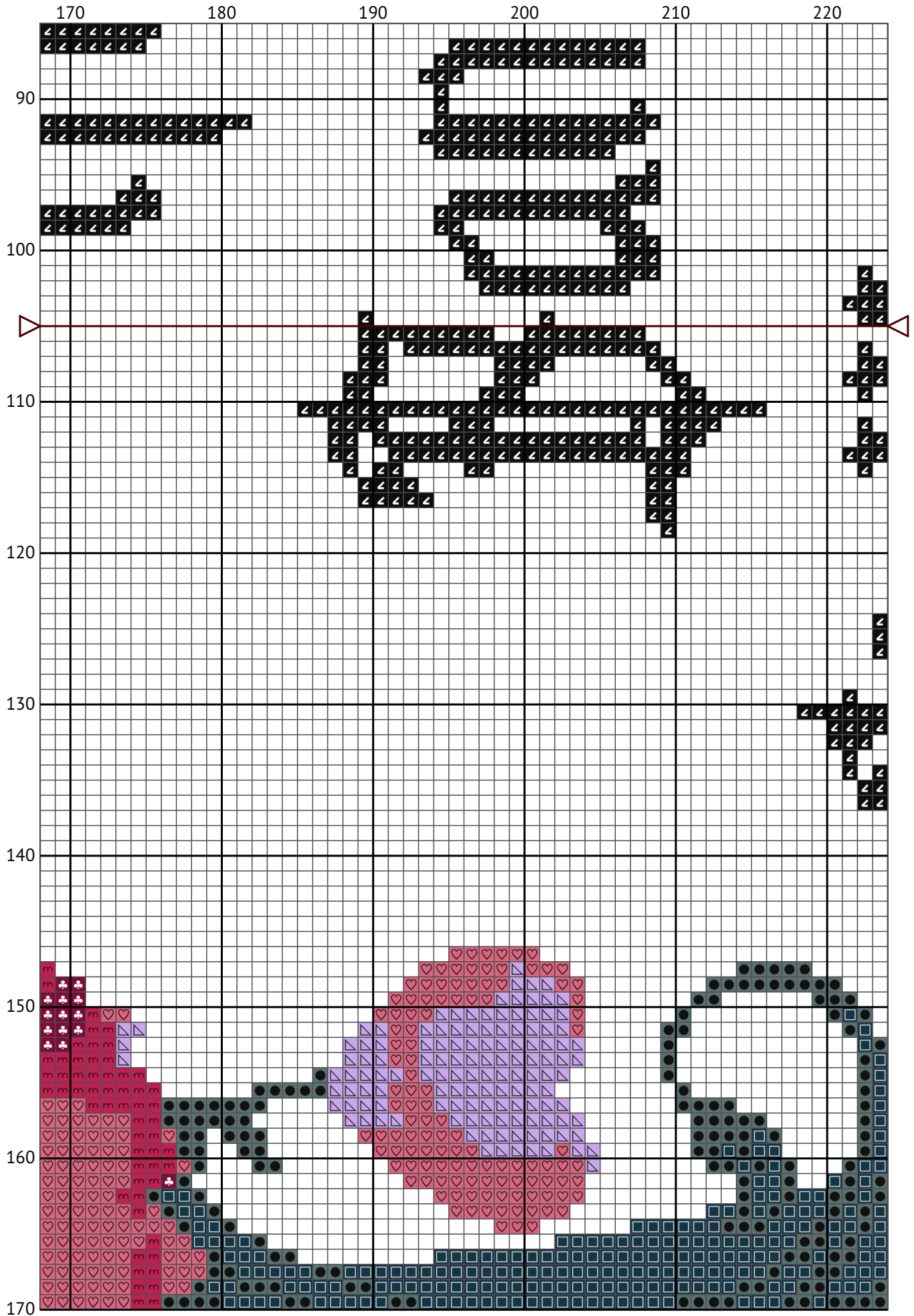


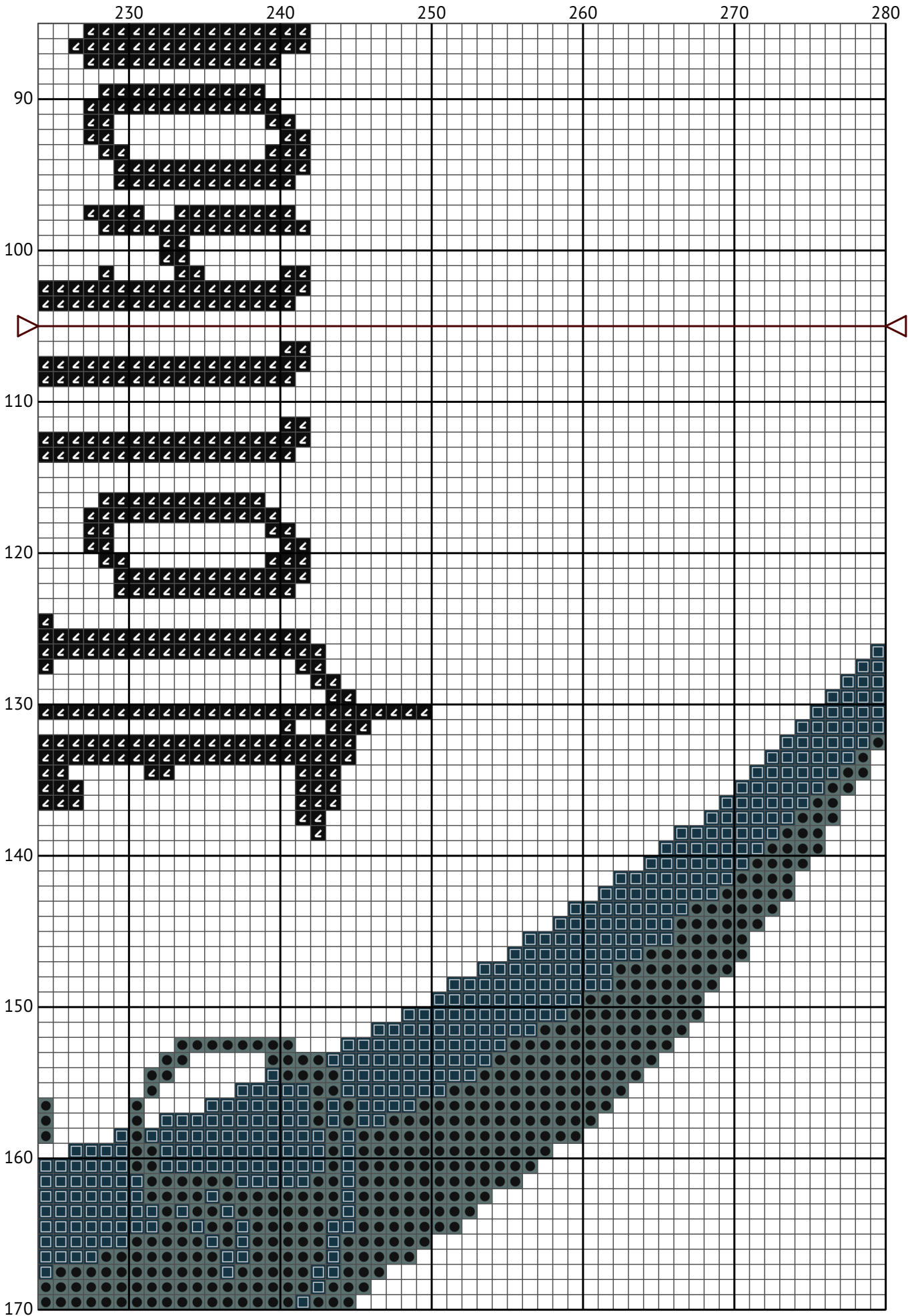


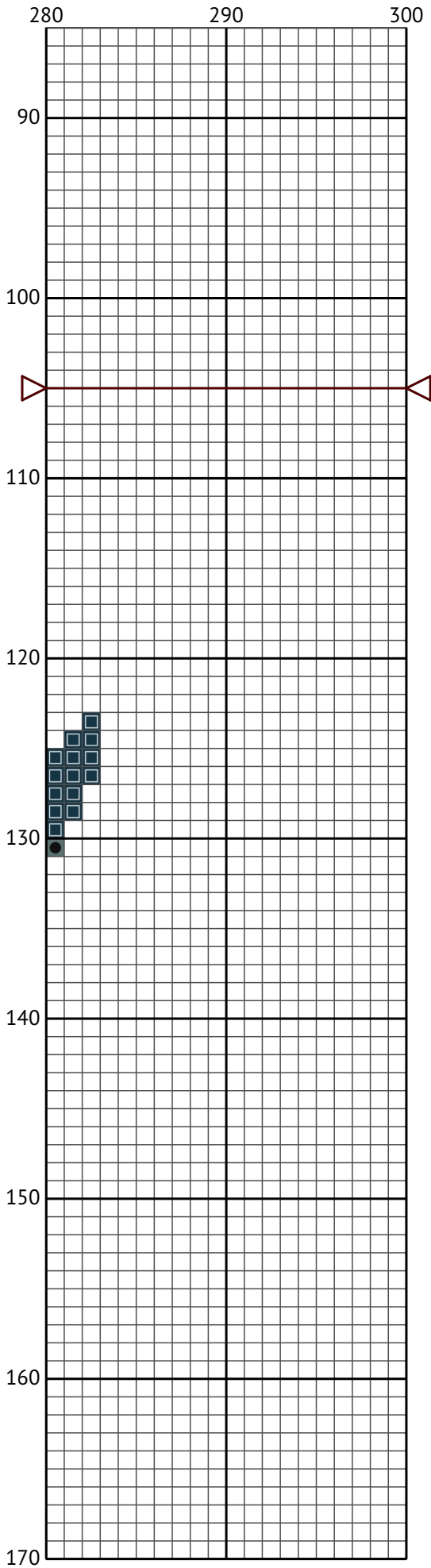


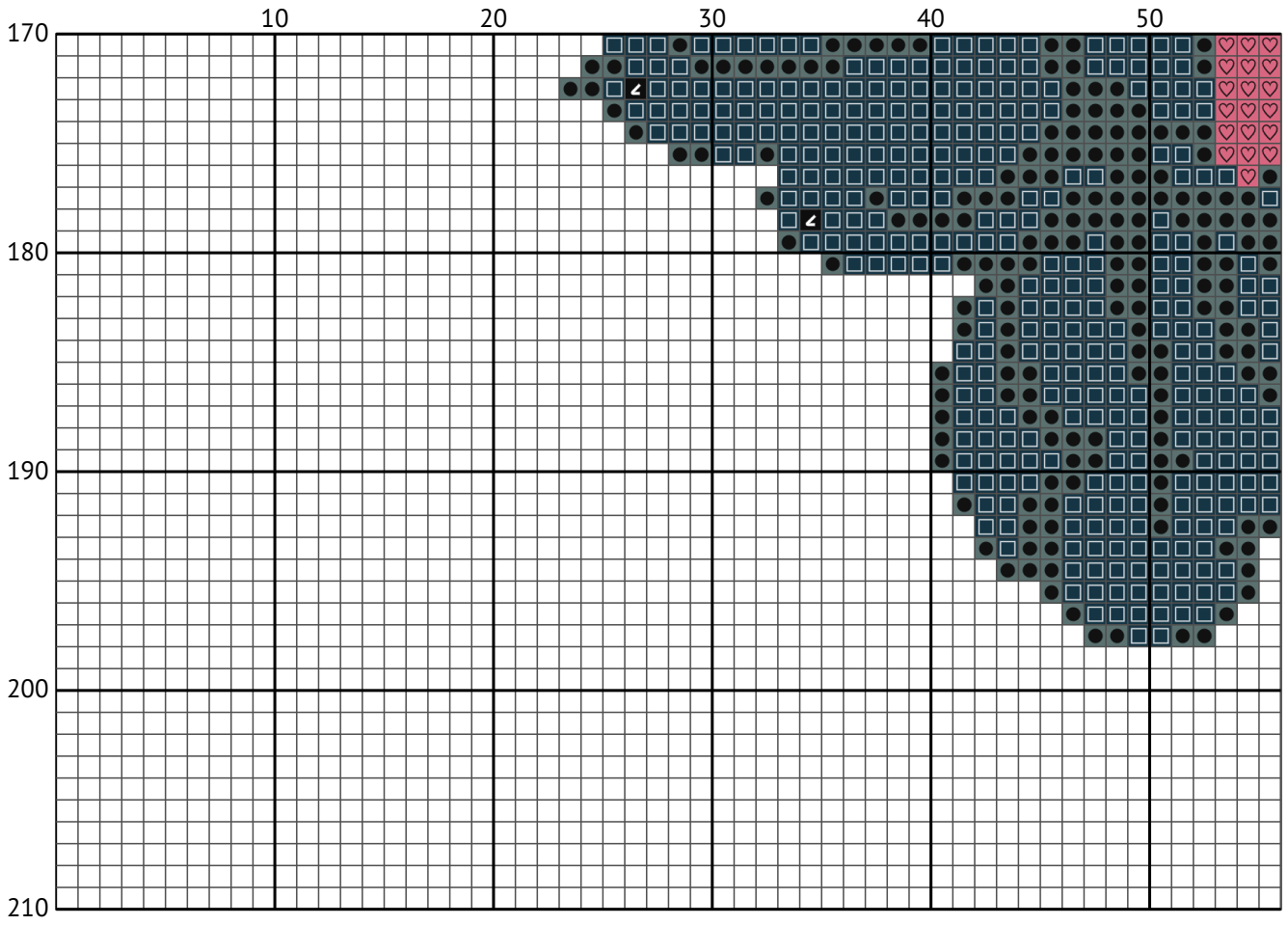


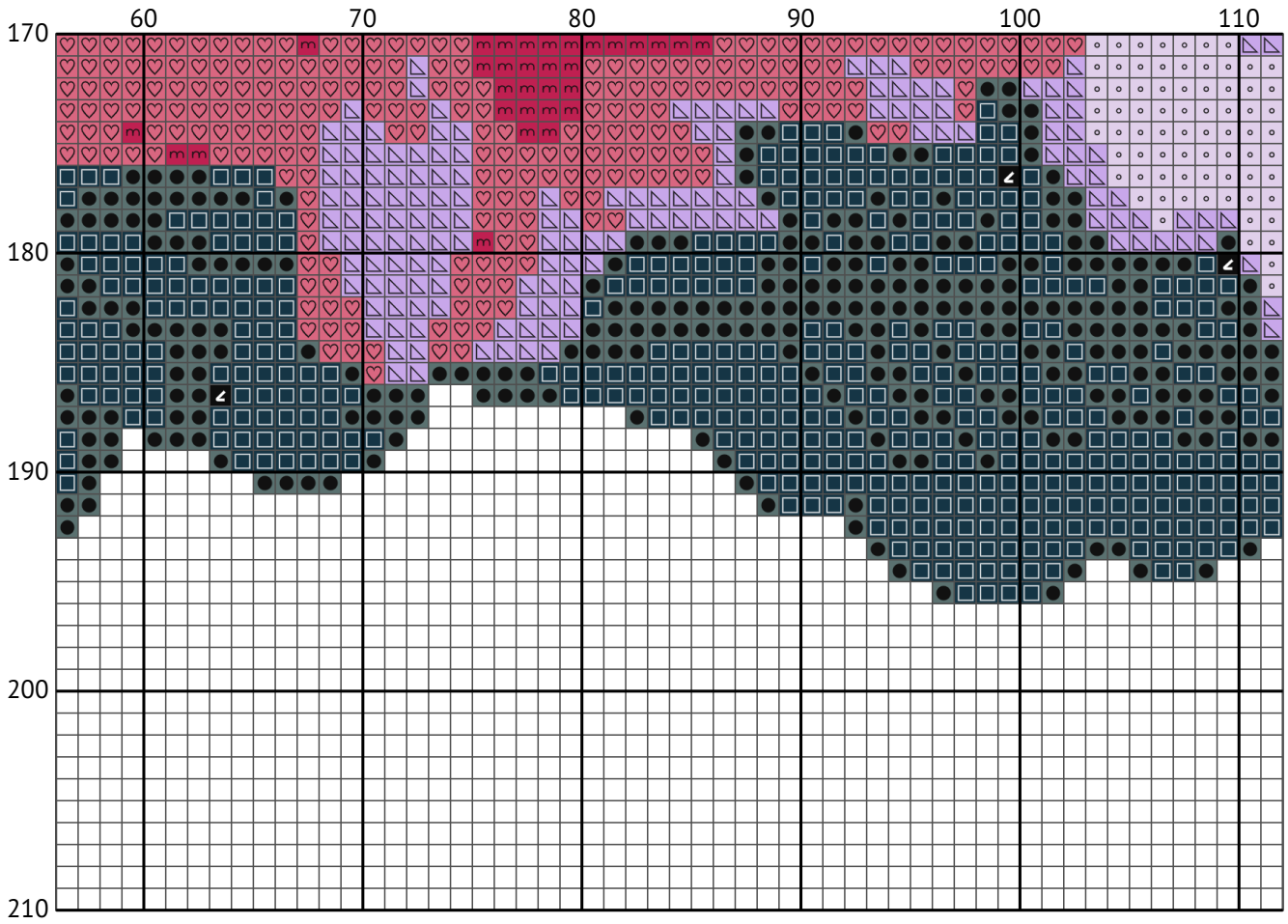


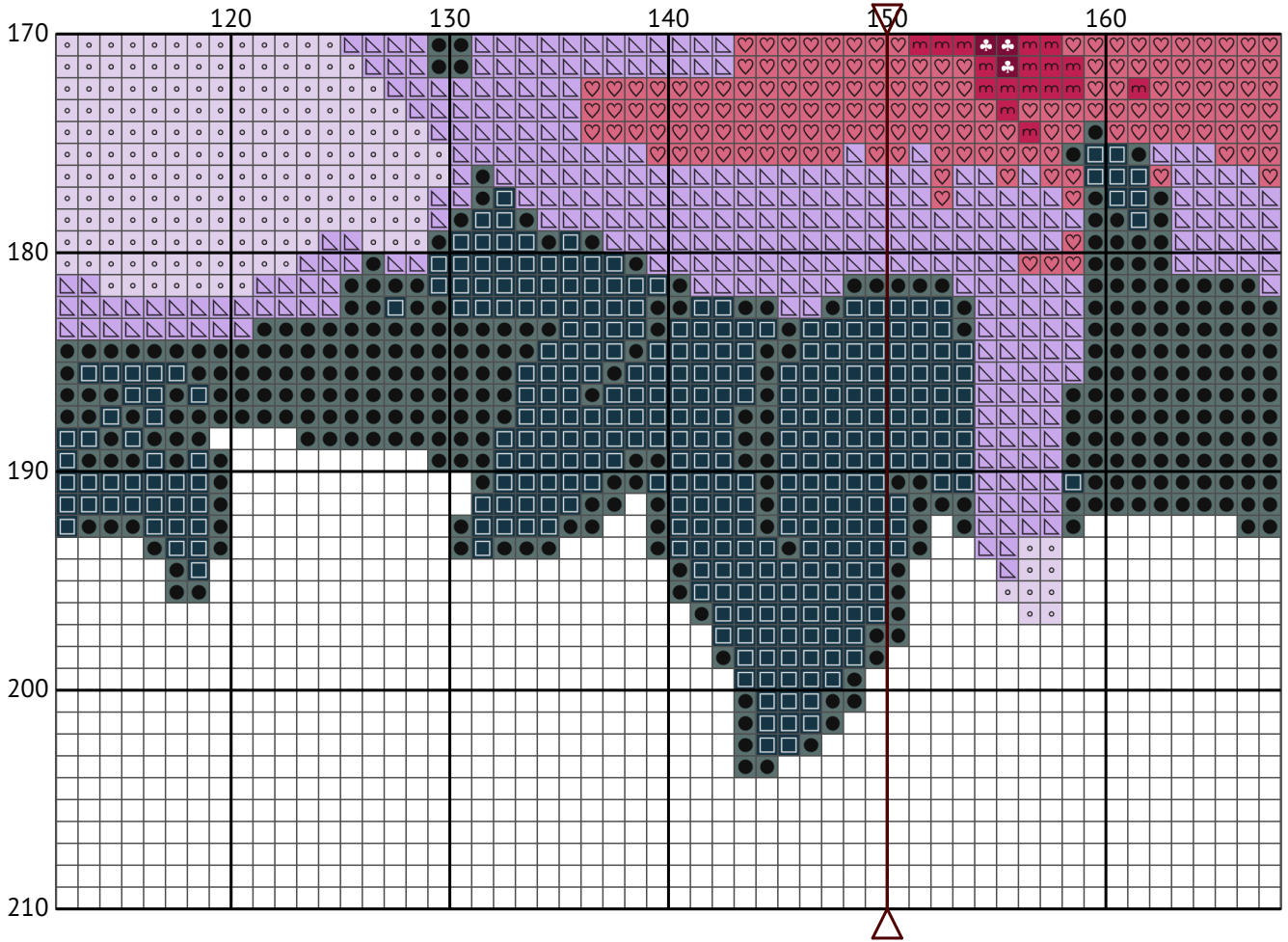


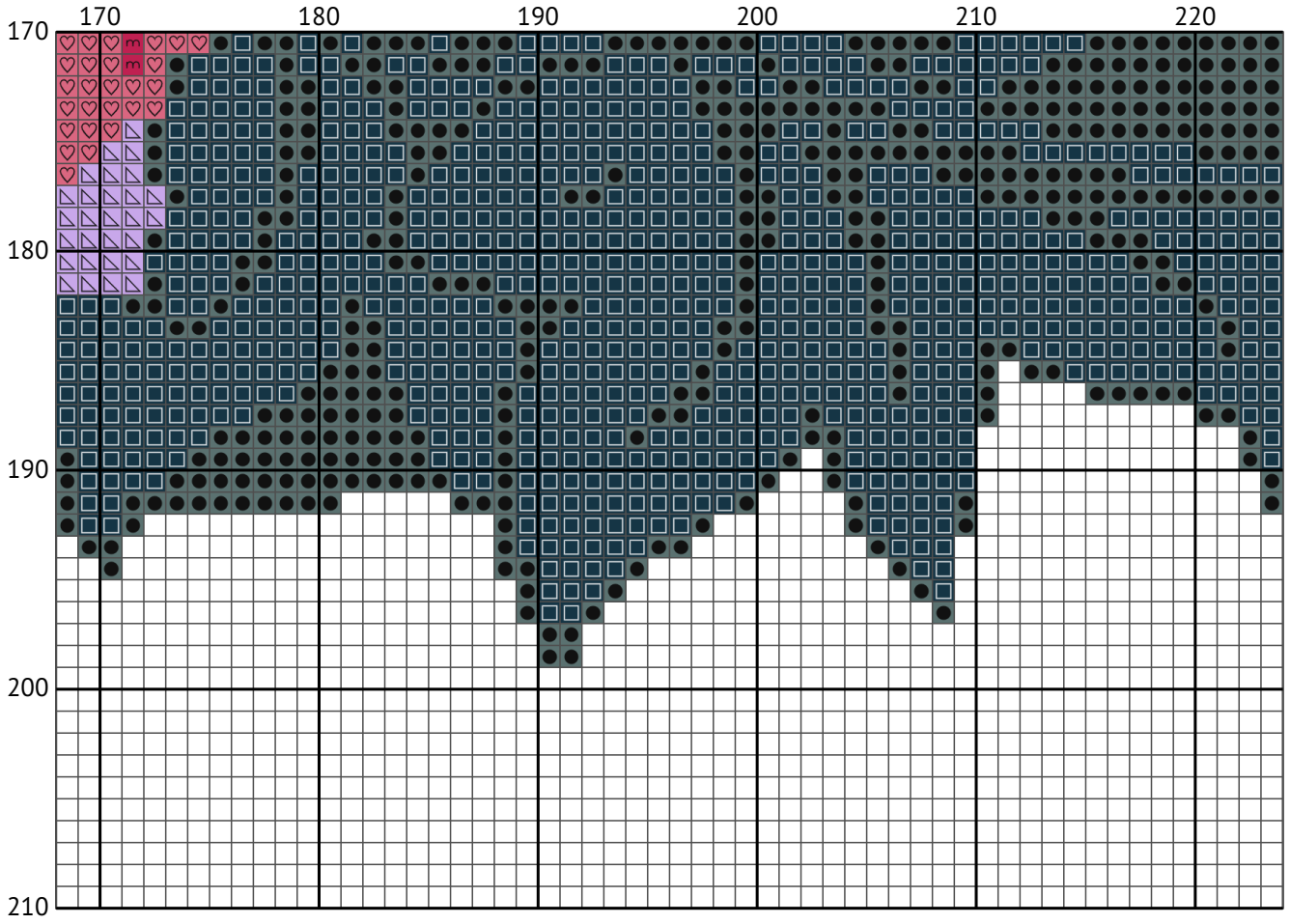


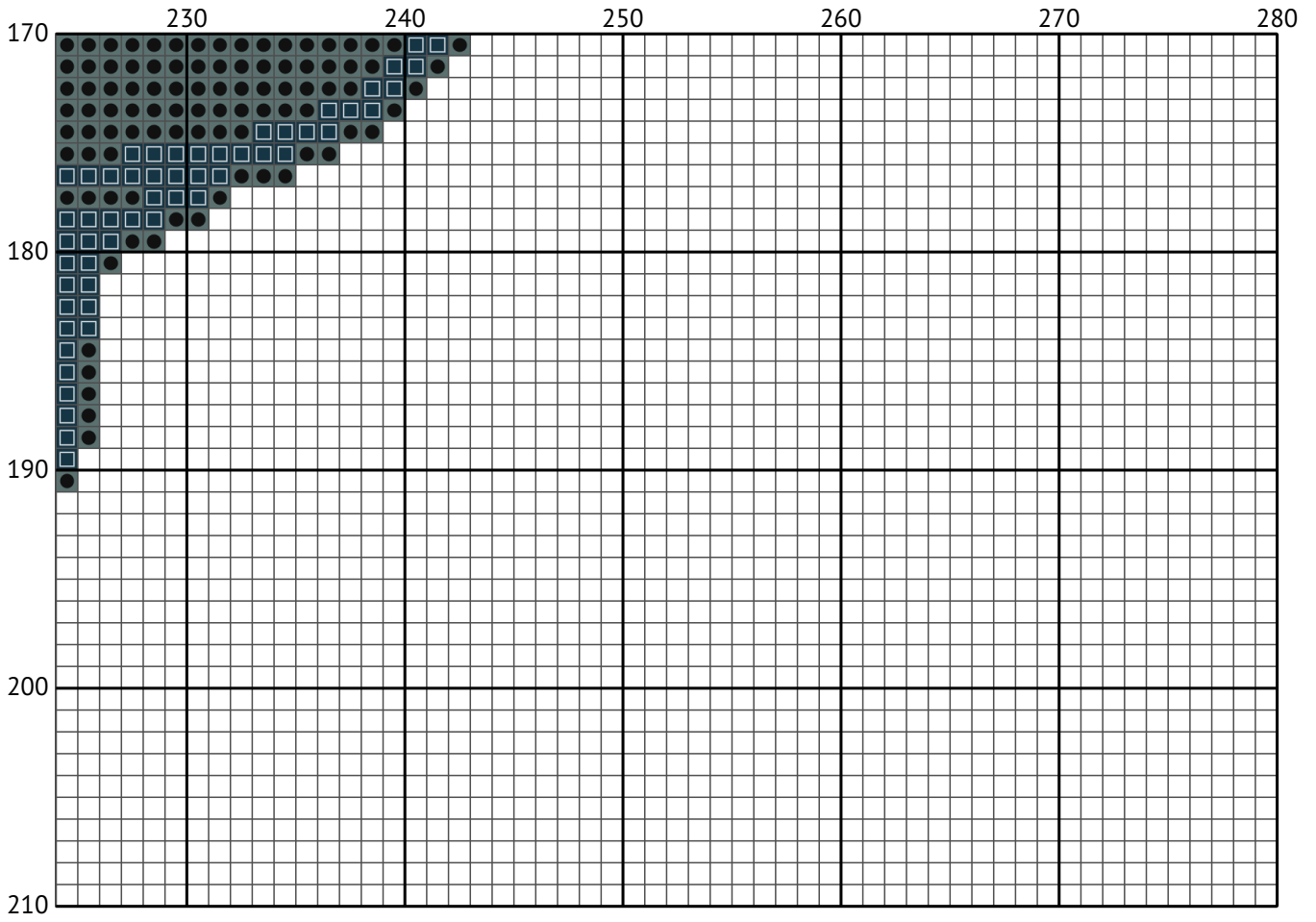


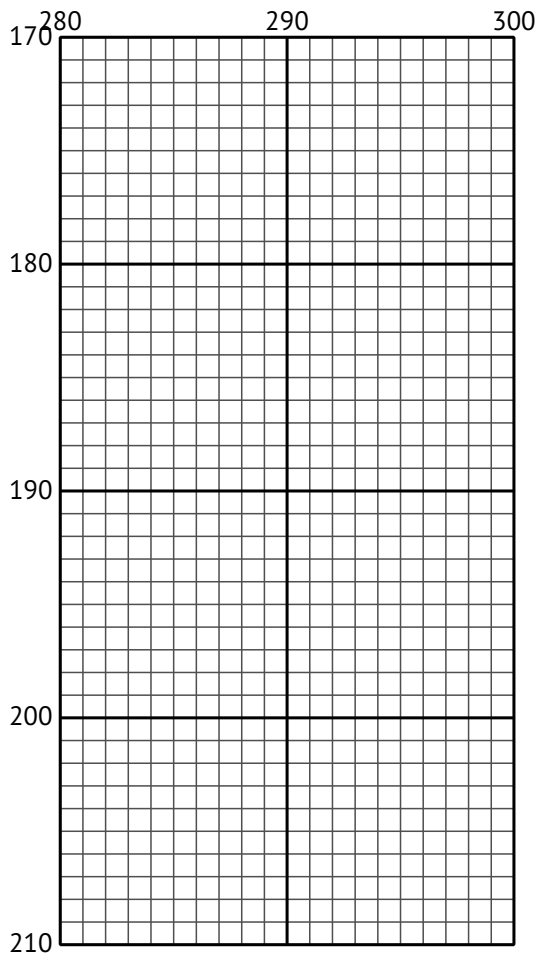




























Floss list for crosses

Use 2 strands of thread for cross stitch

N	Symbol	Number	Name	Stitches
1		 DMC 24	Lavender - White	543
2		 DMC 211	Lavender - Light	1882
3		 DMC 310	Black	2699
4		 DMC 915	Plum - Dark	1628
5		 DMC 926	Gray Green - Medium	3818
6		 DMC 3733	Dusty Rose	2663
7		 DMC 3804	Cyclamen Pink - Dark	1259
8		 DMC 3808	Turquoise - Ultra Very Dark	5312